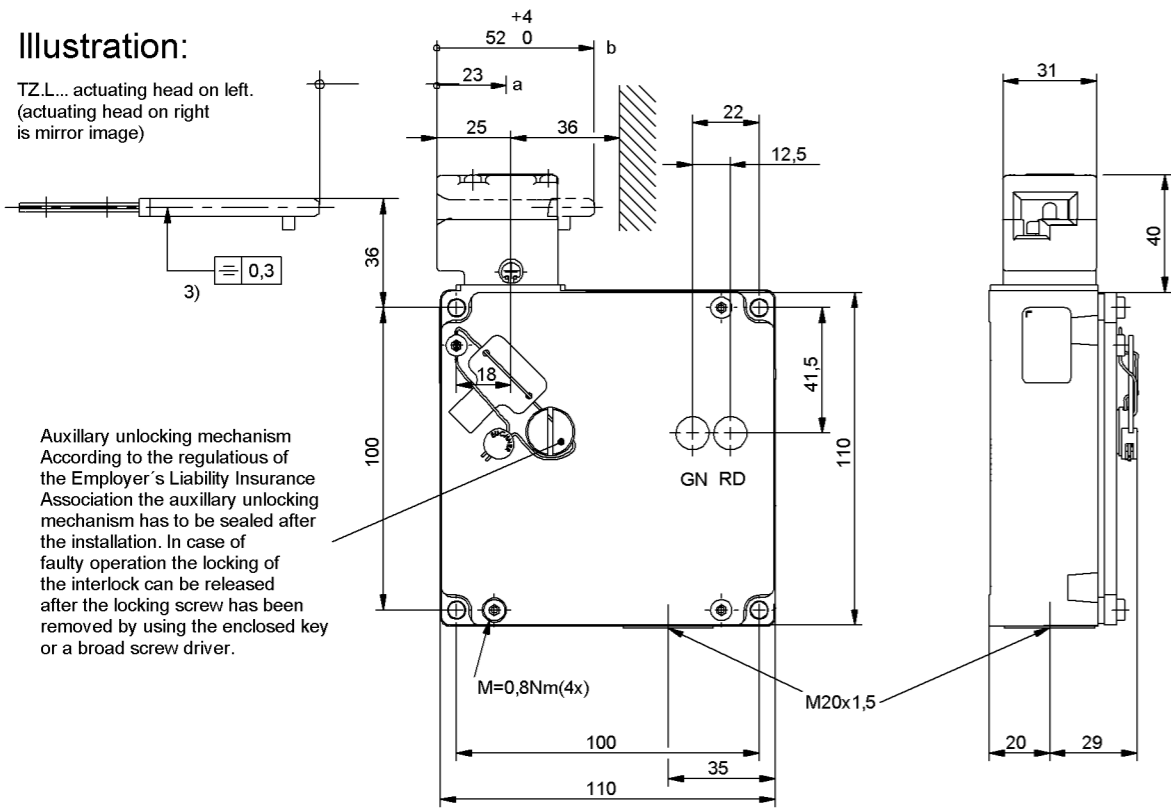
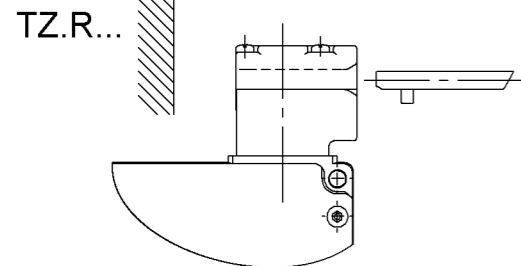
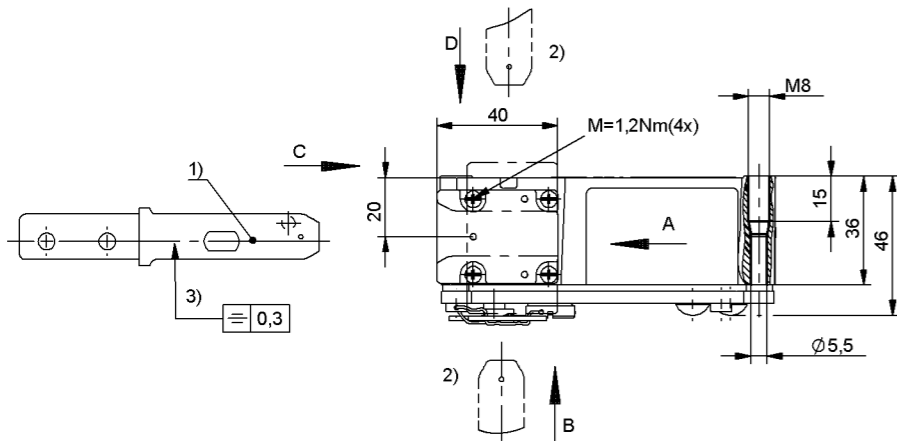


Illustration:

TZ.L... actuating head on left.
(actuating head on right is mirror image)



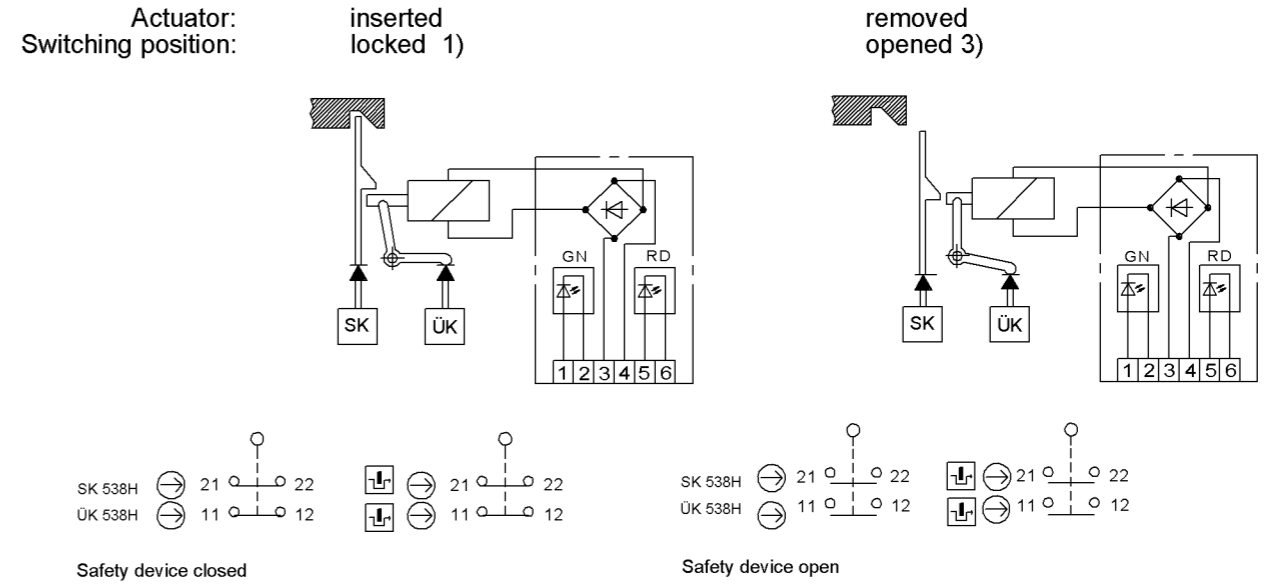
Auxiliary unlocking mechanism
According to the regulations of the Employer's Liability Insurance Association the auxiliary unlocking mechanism has to be sealed after the installation. In case of faulty operation the locking of the interlock can be released after the locking screw has been removed by using the enclosed key or a broad screw driver.



- a Pre-travel:
The actuator is in the guide, but does not initiate switching operation.
- b Switching operation complete:
The actuator must be inserted up to this point to ensure reliable switching. The actuator must be withdrawn at least to point a) for switching off.

- 1) Actuator enclosed
 - 2) The actuator head can be turned to the desired approach direction after undoing the fixing screws.
 - 3) For mounting on the machine the safety switch and the actuator have to be assembled
- It is not allowed to use safety switch as a mechanical stop

Switching principle



ÜK = control circuit
SK = safety circuit

TZ1: Unlocking by applying voltage
TZ2: Locking by applying voltage

Technical Data Please observe the operating instructions (in case of disagreement between data sheet and operating instructions, the information of the data sheet are to be considered)

110358	TZ2RE024M-RC2244	24V
ID-No.	Type	Operating voltage

Parameter	Wert	Einheit
Housing material	Anodized die-cast alloy	
Material for the sealings	Silicone	
Environmental protection to IEC 60529	IP67	
Mechanical operations	1 x 10 ⁶	
Ambient temperature	-25 bis +80 °C	
Mounting position	optional	
Approach speed max.	20	m/min
Actuating-, Extraction-, Retaining force (20°)	35 / 30 / 10	N
Locking force max.	2000	N
Locking force according to test principle GS-ET-19 (F _{zh} = F _{max} /1,3)	1500	N

SWITCH ELEMENT

Type	SK538H, UK538H	
Switching principle	Slow action	
Switching contacts	NC	
Contact material	Silver alloy, gold-flashed	
Terminal	Cable entry M20x1,5	
Max. conductor cross-section	1,5	mm ²
Rated insulation voltage U _i	250	V
Rated impulse withstand voltage U _{imp}	2,5	kV
Utilization category to IEC / EN 60 947-5-1	AC-15 Ie 4A Ue 230V DC-13 Ie 4A Ue 24V	
Switching voltage min. at 10mA	12	V
Switching current min. at 24V	1	mA
Short-circuit protection (control fuse)	4A gG	

SOLENOID

Operating voltage, see type	24	V
ON time	100	%
Connected load	7	W

Status LED's The operating voltage of the LEDs correspond to the supply voltage of the solenoid

© EUCHNER GmbH + Co KG. Technische Änderungen vorbehalten; alle Angaben ohne Gewähr / Subject to technical modifications; no responsibility is accepted for the accuracy of this information.