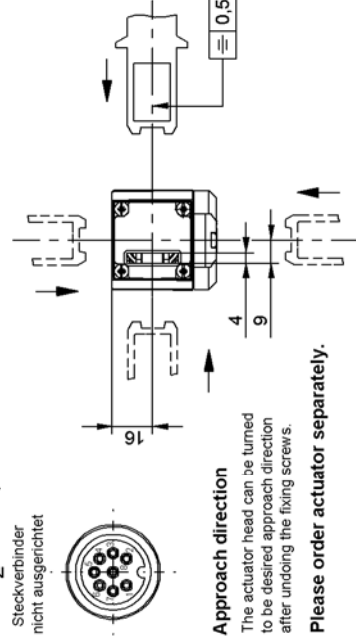
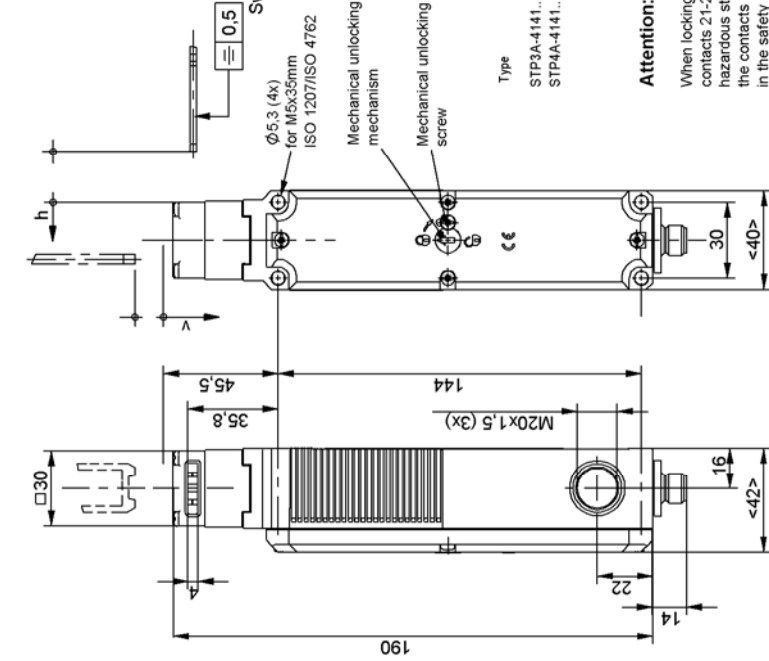


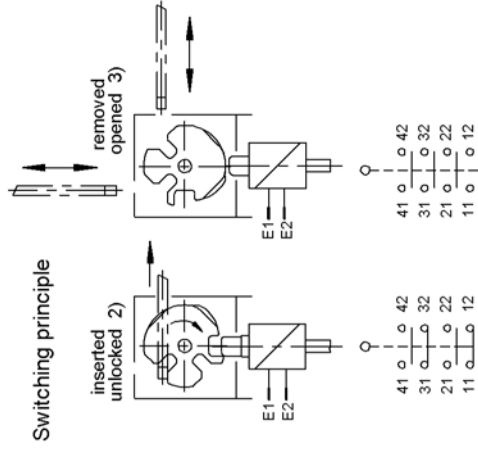
Minimum Travel - overtravel	
Approach direction horizontal (h)	Actuator "S" Standard 24.5 +5
vertical (v)	24.5 +6



Approach direction

The actuator head can be turned to be desired approach direction after undoing the fixing screws.

Please order actuator separately.



Switching principle

Actuator: inserted locked 1)

Switching position: inserted locked 1)

inserted unlocked 2)

removed opened 3)

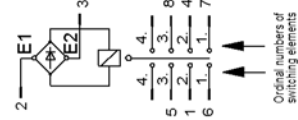
Attention:

When locking and/or unlocking the guard locking, only the contacts 21-22 and 41-42 are actuated. For applications with hazardous states (e.g. overtravelling movements), the contacts 21-22 and/or 41-42 always have to be integrated in the safety circuit.

Setup:

Close the safety guard. Unlock the guard locking and keep the safety guard closed. The machine must not be induced/initiated for start.

Pin assignment, plug connector SM8



Technical Data

Please observe the operating instructions (in case of disagreement between data sheet and operating instructions, the information of the data sheet are to be considered)

Parameters	Value	Unit
Housing material	Reinforced thermoplastics (fibreglass)	
Environmental protection to IEC 60529	IP 67	
Mounting position	optional	
Mechanical service life	1x10 ⁵ switching cycles	
Ambient temperature	-20 to +55	
Approach speed max.	20	°C
Actuating-/ extraction-/ retention force	35 / 30 / 20	m/min.
Locking force, F _{max} .	2500	N
Locking force F _{zh} (incl. safety margin acc. to GS-ET-19)	2000	N
Locking method	N	
Actuator inserted:	STP1: Mechanically locked, 1) unlocking by applying voltage up to position opened. 3) STP3: Mechanically locked, 1) unlocking by applying voltage up to position unlocked 2). Opened 3) if actuator is removed.	
Weight	approx. 0.5	kg
Solenoid operating voltage	+10% / -15%	V
Duty cycle	AC/DC 24	%
Connected load	8	W
Switching principle	Dependent action contact element	
Contact material	Silver alloy, gold flashed	
Type of Connection	Plug connector SM12 (8-pin)	
Rated insulation voltage U _i	30	V
Rated impulse withstand voltage U _{imp}	1.5kV eff. / 60s	
Utilization category according to EN 60947-5-1	AC-15 1A 24V DC-13 1A 24V	
Switching voltage min.	12	V
Switching current min. at 24 V	1	mA
Conventional thermal current I _{th}	1	A
Short circuit protection (control circuit fuse)	1A gG	

