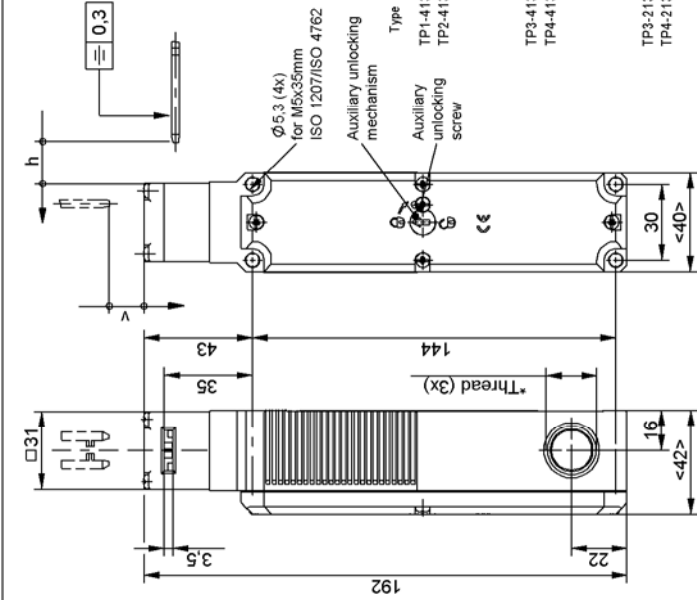


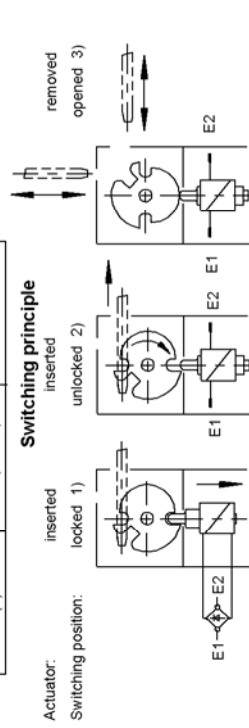
Minimum travel + overtravel		
Approach direction horizontal (h)	Actuator standard	Actuator overtravel
vertical (v)	28 +2	28 +7
	29.5 +1.5	---



192

The safety switch and actuator must be assembled for installation purposes.

The safety switch must not be used as an end stop!



Actuator:	Switching position:	inserted locked 1)	inserted unlocked 2)	removed opened 3)
TP3-4131..	TP4-4131..			
TP3-2131..	TP4-2131..			
TP3-4121..	TP4-4121..			
TP3-4141..	TP4-4141..			



Pin assignment, plug connector SR11

Original numbers of switching elements

⁵⁾ direct opening + 1 delayed as door contact

Approach direction

The actuator head can be turned to the desired approach direction after undoing the fixing screws.

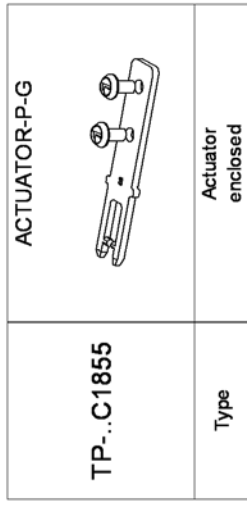
Please order actuator separately.

Attention:

When locking and/or unlocking the guard locking, only the contacts 21-22 and 41-42 are actuated. For applications with hazardous states (e.g. overtraveling movements) in the contacts 21-22 and/ or 41-42 always have to be integrated in the safety circuit.

Setup:

Close the safety guard. Unlock the guard locking and keep the safety guard closed. The machine must not be induced / initiated for start.



Technical Data Please observe the operating instructions (in case of disagreement between data sheet and operating instructions, the information of the data sheet are to be considered)

Parameter	Value	Unit
Type TP...M, NPT, PG	Type TP...SR11	
Housing material	Reinforced thermoplastics (fibreglass)	
Environmental protection to IEC 60529	IP 67	
Mounting position	IP 65	
Mechanical service life	optional	
Ambient temperature	1x10 ⁶ Switching cycles	°C
Approach speed max.	-20 to +55	m/min.
Retaining force in locked condition	20	N
Locking method	1200	
Actuator inserted:	TP1: Mechanically locked, 1) unlocking by applying voltage up to position opened. 3) TP2: Locking 1) by applying voltage. Opened 3) without voltage. TP3: Mechanically locked, 1) unlocking by applying voltage up to position unlocked. 2) TP4: Locking 1) by applying voltage. Unlocked 2) without voltage.	
Weight	approx. 0.5	kg
Solenoid operating voltage	AC/DC 24 AC 110 AC 230V	V
On time	100	%
Connected load	8	W
Switching principle	Dependent action contact element	
Contact material	Silver alloy, gold flashed	
Connection	Screw terminal	mm ²
Cross section max.	1.5	
Rated insulation voltage Ui	250	V
Rated impulse withstand voltage Uimp	2.5	kV
Utilization category according to EN 60947-5-1	AC-15 4A 230V DC-13 4A 24V	
Switching voltage min. at 10mA	12	V
Switching current min. at 24 V	1	mA
Conventional thermal current Ith	4	A
Short circuit protection (control circuit fuse)	4A.gG	