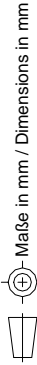
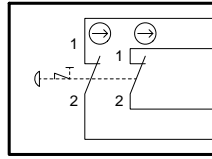


Technische Änderungen vorbehalten, alle Angaben ohne Gewähr / Subject to technical modifications; no responsibility is accepted for the accuracy of this information. © EUCHNER GmbH + Co. KG

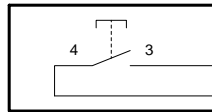


S1
NOT-HALT
emergency-stop



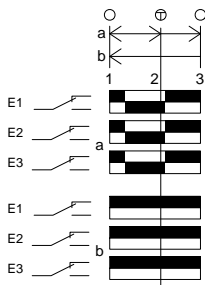
RDWH wrst
GNWH wsgn
BUWH wsbl
YEWH wsge

S2
Drucktaste
push button

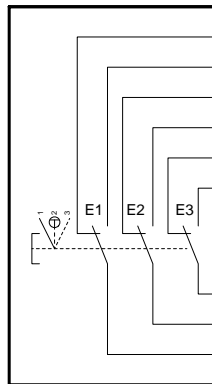


GYPK grss
VT vi

S3
Zustimmtaster
enabling push button



Kontakte / Contacts
 □ offen / open
 ■ geschlossen / closed
 ⊕ Druckpunkt / Trigger point



LP1 YE ge
LP2 BU bl
LP10 BK sw
LP9 PK rs
LP11 RD rt
LP12 GY gr
LP13 WH ws
LP8 BN br
LP5 GN gn

Adern
nicht angeschlossen/
wires
not connected:

RDBU rtbl
BNEY gebr
BNGN brgn
GYWH wsgr
BNGY grbr
WHPK wsrs
BNPK rsbr
BNBU brbl

Schirm / shield

Leitung / cable:
23x0,14mm²