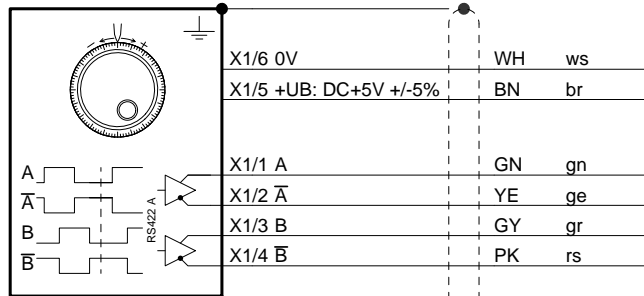


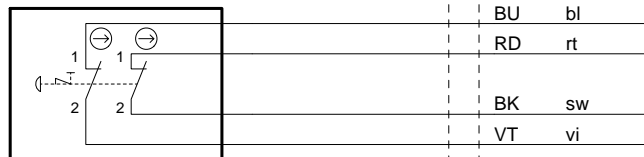
Technische Änderungen vorbehalten, alle Angaben ohne Gewähr / Subject to technical modifications; no responsibility is accepted for the accuracy of this information. © EUCHNER GmbH + Co. KG



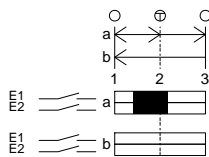
A1
Handrad 100 Impulse
handwheel 100 pulses
RS422 A
A05



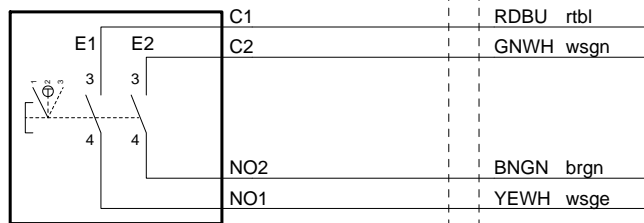
S1
NOT-HALT
emergency-stop



S2
Zustimmtaster links
enabling switch left
ZXE

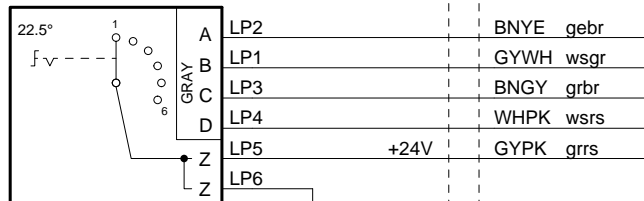


Kontakte / Contacts
 offen / open
 geschlossen / closed
 ⊕ Druckpunkt / Trigger point



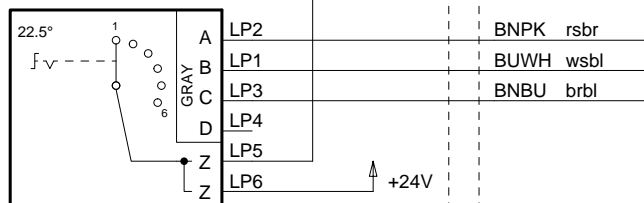
S3	DCBA	
1	0000	X
2	0001	Y
3	0011	Z
4	0010	4
5	0110	5
6	0111	6

S3
Stufenschalter links
6 Stellungen
selector switch left
6 positions



S4	DCBA	
1	0000	0
2	0001	0,1
3	0011	1
4	0010	10
5	0110	100
6	0111	1000

S4
Stufenschalter rechts
6 Stellungen
selector switch right
6 positions



Adern 0,14² / wires 0,14²

Technische Änderungen vorbehalten, alle Angaben ohne Gewähr / Subject to technical modifications; no responsibility is accepted for the accuracy of this information. © EUCHNER GmbH + Co. KG
 Maße in mm / Dimensions in mm

