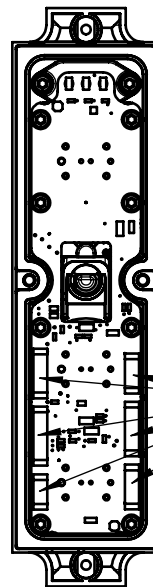
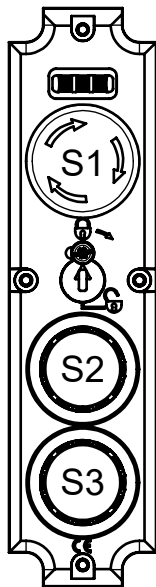


ESD-Schutzmaßnahmen sind beim Tausch des Deckels am CTP Sicherheits- schalter zu beachten und einzuhalten. / ESD protective measures are required when replacing the cover on the CTP safety switch must be observed.



6x Verbindungsleitung nicht beigelegt
6x Connecting cable not included

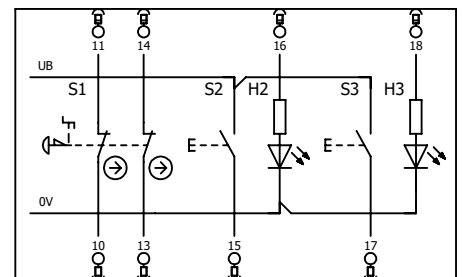
Inklusive:
Including:

Blenden-Set für Taster:
Lens-Set for button:
2x weiss / white
1x blau / blue
1x gelb / yellow
1x grün / green
1x rot / red



Schrauben:
Screw:
4x 3x15

Belegung
Deckeltaster
Connection
top cover button



**Belegung Deckeltaster
Connection top cover button**

PIN	Bezeichnung / Marking	19-polig	19 pole
10	S1.A1	NOT-HALT (Kanal A)	Emergency stop (circuit A)
11	S1.A2	NOT-HALT (Kanal A)	Emergency stop (circuit A)
13	S1.B1	NOT-HALT (Kanal B)	Emergency stop (circuit B)
14	S1.B2	NOT-HALT (Kanal B)	Emergency stop (circuit B)
15	S2	Taster 2 (beleuchtet)	Button 2 (illuminated)
16	H2	LED 2	LED 2
17	S3	Taster 3 (beleuchtet)	Button 3 (illuminated)
18	H3	LED 3	LED 3

ID-Nr. / ID No.	S1	S2	S3	Bemerkung / Remark
AY-CVR-159324	NOT-HALT Taster Emergency stop	Taster beleuchtet Button illuminated	Taster beleuchtet Button illuminated	Deckelfarbe rot Cover colour red

Maße in mm / Dimensions in mm
© EUCHNER GmbH + Co. KG
Technische Änderungen vorbehalten, alle Angaben ohne Gewähr / Subject to technical modifications; no responsibility is accepted for the accuracy of this information.