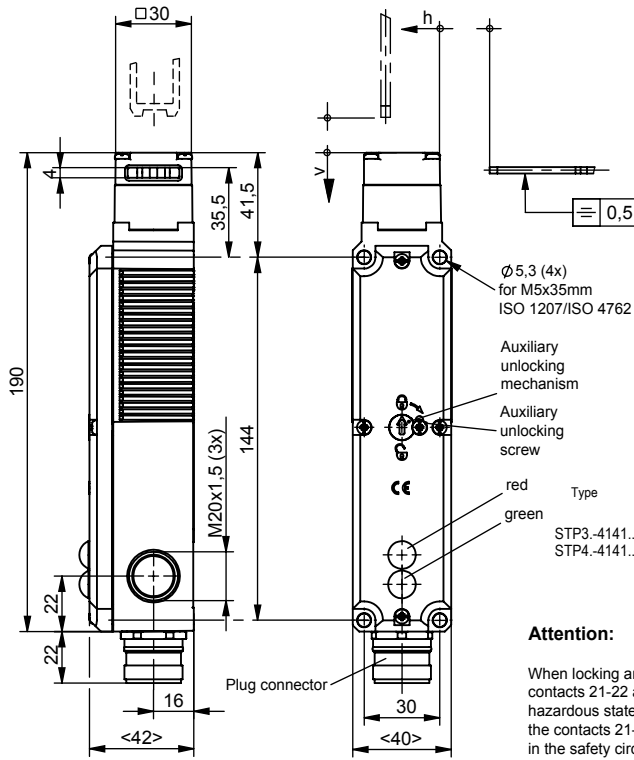


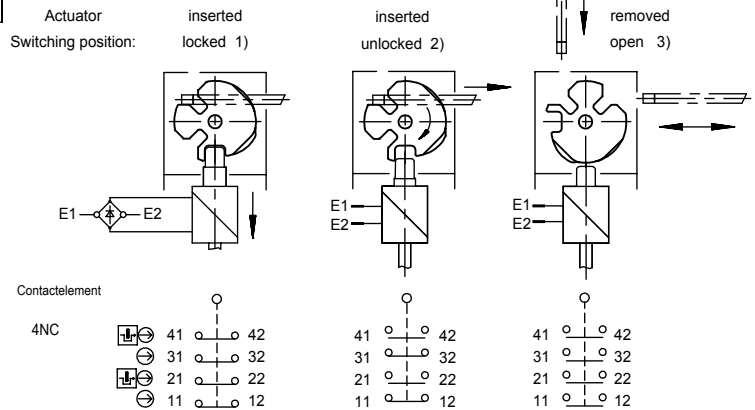
Technische Änderungen vorbehalten, alle Angaben ohne Gewähr / Subject to technical modifications; no responsibility is accepted for the accuracy of this information. © EUCHNER GmbH + Co. KG



Minimum Travel - overtravel	
Approach direction	Standard actuator
horizontal (h)	24,5 +5
vertical (v)	24,5 +5

The safety switch and actuator must be assembled for installation purposes.  
The safety switch must not be used as an end stop.

**Switching principle**

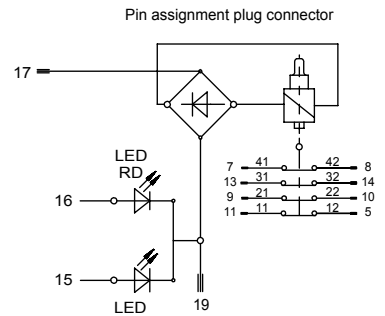


**Attention:**

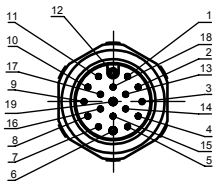
When locking and/ or unlocking the guard locking, only the contacts 21-22 and 41-42 are actuated. For applications with hazardous states (e.g. overtravelling movements), the contacts 21-22 and/ or 41-42 always have to be integrated in the safety circuit.

**Setup:**

Close the safety guard. Unlock the guard locking and keep the safety guard closed. The machine must not be induced/ initiated for start.



Plug connector -RC18 not aligned



**Approach direction**

The actuator head can be turned to be desired approach direction after undoing the fixing screws.

**Please order actuator separately.**

114422	STP4A-4141A024L024RC18
ID-No.	Type

**Technical Data**

Please observe the operating instructions (in case of disagreement between data sheet and operating instructions, the information of the data sheet are to be considered)

Parameters	Value	Unit
Housing material	Reinforced thermoplastics (fibreglass)	
Environmental protection to IEC 60529	IP 65	
Mounting position	optional	
Mechanical service life	1x10 <sup>6</sup> Switching cycles	
Ambient temperature	-20 to +55	°C
Approach speed max.	20	m/min.
Actuating- / extraction- / retention force	35 / 30 / 20	N
Locking force F max.	2500	N
Locking force Fzh (incl. safety margin acc. to GS-ET-19)	2000	N
Locking method	STP1: Mechanically locked, 1) unlocking by applying voltage up to position openend. 3)	STP2: Locking 1) by applying voltage. Opened 3) without voltage.
Actuator inserted:	STP3: Mechanically locked, 1) unlocking by applying voltage up to position unlocked 2). Open if actuator is removed 3).	STP4: Locking 1) by applying voltage. Unlocked 2) without voltage. Open if actuator is removed 3)
Weight	approx. 0,5	kg
Solenoid operating voltage	+10% / -15% AC/DC 24	V
Connected load	100	%
Switching principle	8	W
Contact material	Dependent action contact element	
Connection	Silver alloy, gold flashed	
Cross section max.	Srew terminal / 1,5 mm <sup>2</sup>	
Rated insulation voltage Ui	50	V
Rated impulse withstand voltage Uimp	1,5	kV
Utilization category according to EN 60947-5-1	AC-15 4A 50V DC-13 4A 24V	
Switching voltage min. at 10 mA	12	V
Switching current min. at 24 V	1	mA
Conventional thermal current Ith	4	A
Short circuit protection (control circuit fuse)	4A gG	