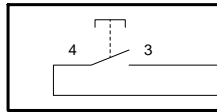


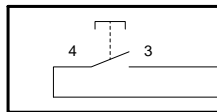
Technische Änderungen vorbehalten, alle Angaben ohne Gewähr / Subject to technical modifications; no responsibility is accepted for the accuracy of this information. © EUCHNER GmbH + Co. KG Maße in mm / Dimensions in mm



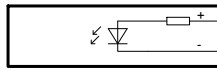
S1
Drucktaste "+"
push button "+"



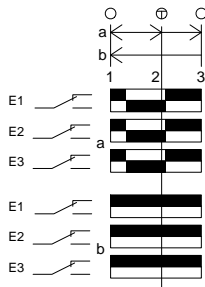
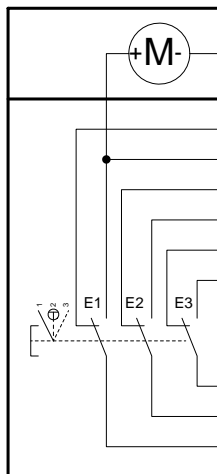
S2
Drucktaste "-"
push button "-"



P1
LED gelb
LED yellow

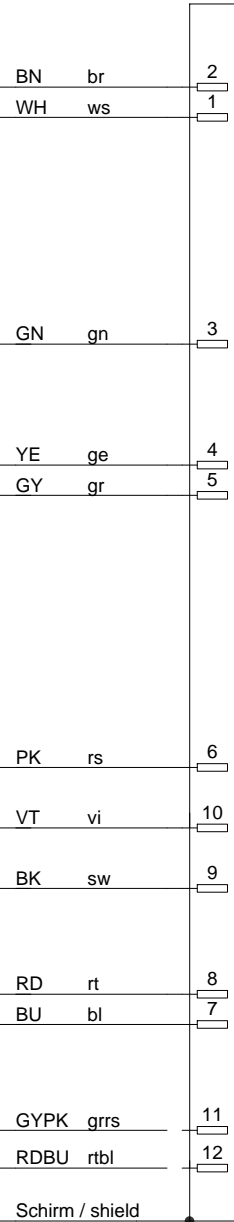


S3
Zustimmtaster
enabling push button



Kontakte / Contacts
 □ offen / open
 ■ geschlossen / closed
 ⊕ Druckpunkt / Trigger point

Adern nicht angeschlossen/
wires not connected:



Adern 0,14² / wires 0,14²

Steckverbinder: Coninvers, 12 pol.
connector: Coninvers, 12 pin