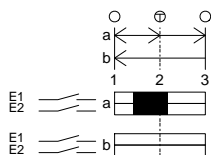
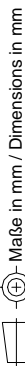
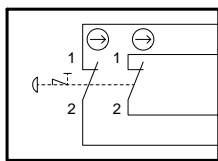


Technische Änderungen vorbehalten, alle Angaben ohne Gewähr / Subject to technical modifications; no responsibility is accepted for the accuracy of this information. © EUCHNER GmbH + Co. KG



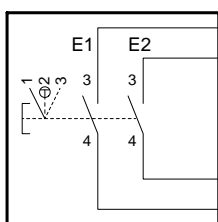
Kontakte / Contacts
 □ offen / open
 ■ geschlossen / closed
 ⊕ Druckpunkt / Trigger point

S1
 NOT-AUS
 emergency-stop



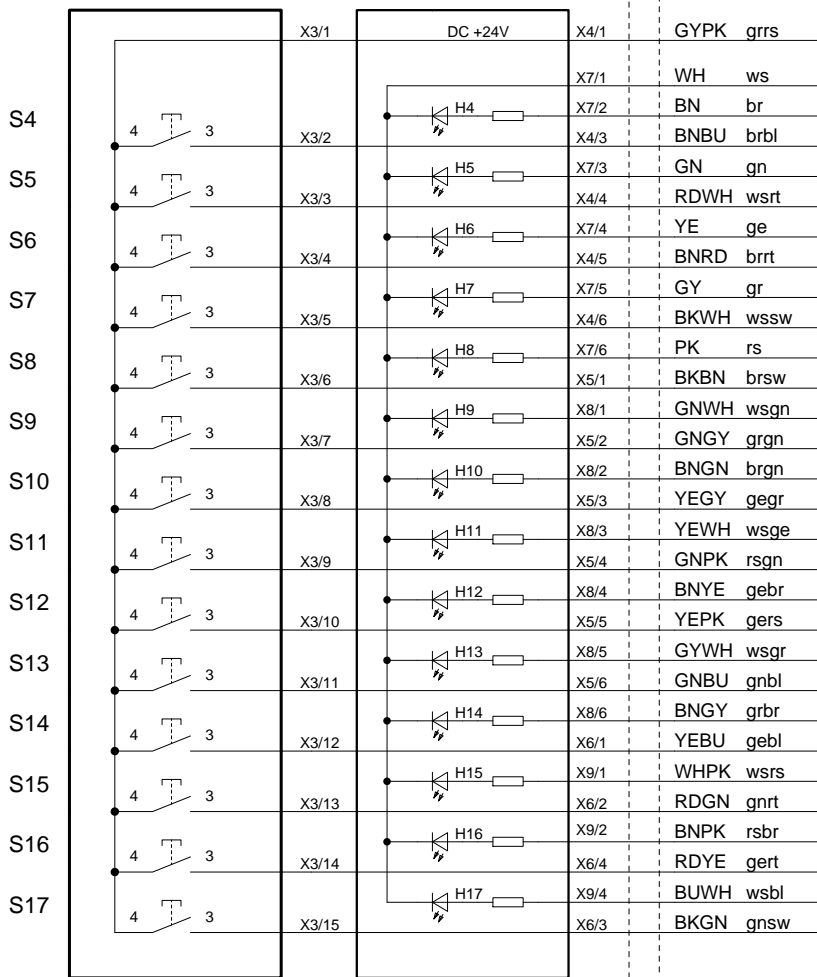
X1/1	BU	bl
X1/3	RD	rt
X1/4	BK	sw
X1/2	VT	vi

S2
 Zustimmungstaster links
 enabling switch left
 ZXE



C1	BKYE	gesw
C2	BUGY	grbl
NO2	BUPK	rsbl
NO1	RDBU	rtbl

S3 nicht vorhanden /
 not available



nicht belegt /
 not connected

RDGY	grrt
RDPK	rsrt
BKGY	grsw
BKPK	rssw

Schirm / shield

Adern 0,14² / wires 0,14²