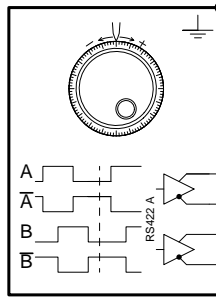


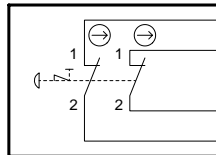
Technische Änderungen vorbehalten, alle Angaben ohne Gewähr / Subject to technical modifications; no responsibility is accepted for the accuracy of this information. © EUCHNER GmbH + Co. KG Maße in mm / Dimensions in mm

A1
Handrad 100 Impulse
handwheel 100 pulses
RS422 A
A05



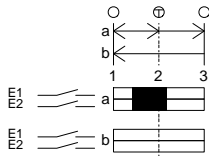
X1/6 0V	WH	ws	A
X1/5 +UB: DC5V ±5%	BN	br	B
X1/1 A	GN	gn	C
X1/2 \bar{A}	YE	ge	D
X1/3 B	GY	gr	E
X1/4 \bar{B}	PK	rs	F

S1
NOT-HALT
emergency-stop

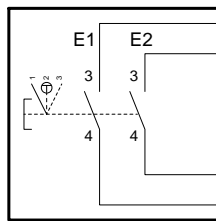


X8/2	BU	bl	W
X8/3	RD	rt	R
X8/4	BK	sw	P
X8/1	VT	vi	V

S2
Zustimmtaster links
enabling switch left
ZXE

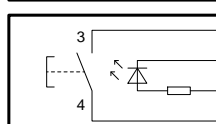


Kontakte / Contacts
 □ offen / open
 ■ geschlossen / closed
 ⊕ Druckpunkt / Trigger point



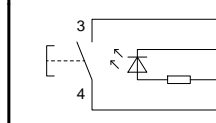
X2/3	RDBU	rtbl	K
X2/2	GNWH	wsgn	L
X2/4	BNGN	brgn	j
X2/1	YEWB	wsge	k

S3
Taste mit LED
push button with LED



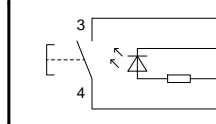
X3/1	24V	X4/1	GYPK	grrs	G
	0V	X6/1	BKWH	wssw	H
X3/2		X6/2	BKBN	brsw	a
		X4/2	BNYE	gebr	J

S4
Taste mit LED
push button with LED



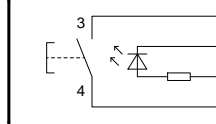
X3/3		X6/3	GNGY	grgn	b
		X4/3	GYWH	wsgr	M

S5
Taste mit LED
push button with LED



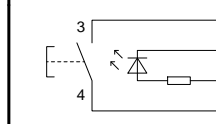
X3/4		X6/4	YEGY	gegr	c
		X4/4	BNGY	grbr	N

S6
Taste mit LED
push button with LED



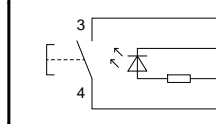
X3/5		X6/5	GNPK	rsgn	d
		X4/5	WHPK	wrsr	S

S7
Taste mit LED
push button with LED



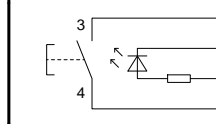
X3/6		X6/6	YEPK	gers	e
		X4/6	BNPK	rsbr	T

S8
Taste mit LED
push button with LED



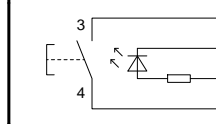
X3/7		X7/1	GNBU	gnbl	f
		X5/1	BUWH	wsbl	U

S9
Taste mit LED
push button with LED



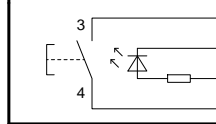
X3/8		X7/2	YEBU	gebl	g
		X5/2	BNBU	brbl	X

S10
Taste mit LED
push button with LED



X3/9		X7/3	RDGN	gnrt	h
		X5/3	RDWH	wsrt	Y

S11
Taste mit LED
push button with LED



X3/10		X7/4	RDYE	gert	i
		X5/4	BNRD	brtt	Z
			BKGN	gnsw	m

Steckverbinder: Burndy 35-pol., Metall/
connector: Burndy 35-pin, metal

Adern und Stifte
nicht angeschlossen/
wires and pins
not connected

Schirm / shield
Adern 35x0,14² / wires 35x0,14²