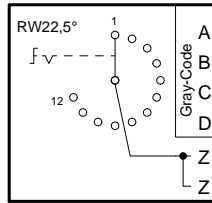


Technische Änderungen vorbehalten, alle Angaben ohne Gewähr / Subject to technical modifications; no responsibility is accepted for the accuracy of this information. © EUCHNER GmbH + Co. KG



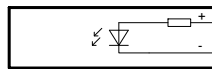
S1	DCBA
1	0000
2	0001
3	0011
4	0010
5	0110
6	0111
7	0101
8	0100
9	1100
10	1101
11	1111
12	1110

S1
Stufenschalter
12 Stellungen
selector switch
12 positions



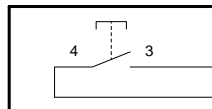
LP2	YE	ge	
LP1	GN	gn	
LP3	BU	bl	
LP4	GY	gr	
LP5	+24V	RD	rt
LP6			

V1
LED gelb
LED yellow



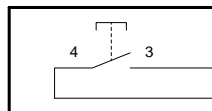
RDBU	rtbl
BNYE	gebr

S2
Drucktaste "+"
push button "+"



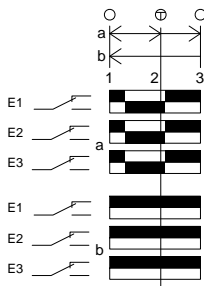
BK	sw
VT	vi

S3
Drucktaste "-"
push button "-"

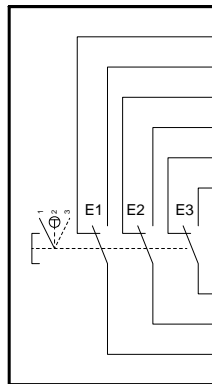


GYPK	grrs
------	------

S4
Zustimmtaster
enabling push button



Kontakte / Contacts
 □ offen / open
 ■ geschlossen / closed
 ⊕ Druckpunkt / Trigger point



LP1		
LP2	RDWH	wsrt
LP10		
LP9	GNWH	wsgn
LP11		
LP12	BUWH	wsbl
LP13	WH	ws
LP8	BN	br
LP5	PK	rs

Adern nicht angeschlossen/
wires not connected:

BNGY	grbr
BNGN	brgn
GYWH	wsgr
YEWB	wsge
BNBU	brbl
WHPK	wsrs
BNPK	rsbr

Schirm / shield

Leitung / cable:
23x0,14mm²