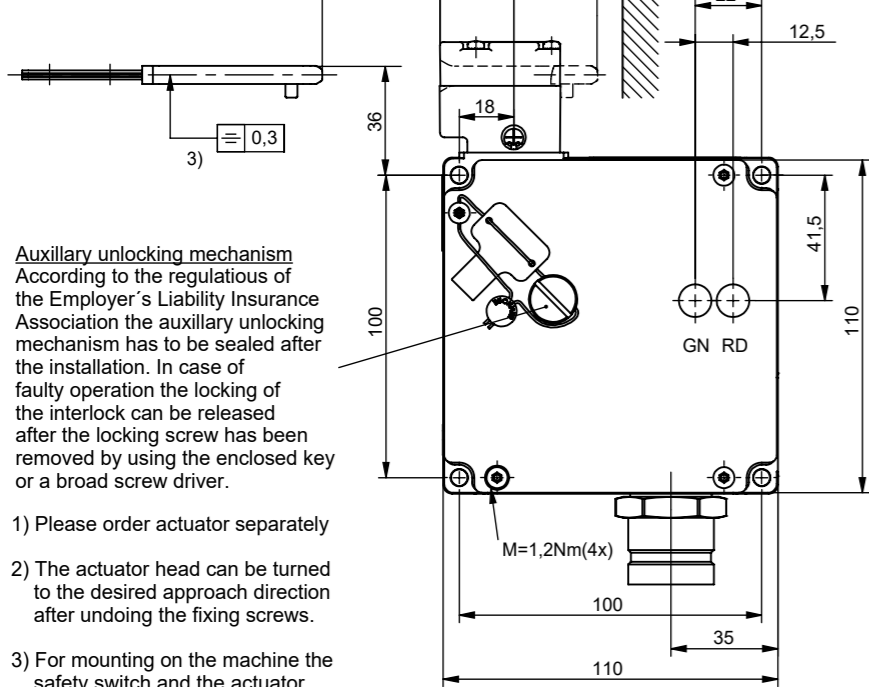


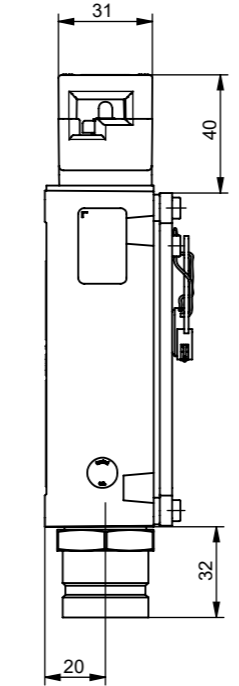
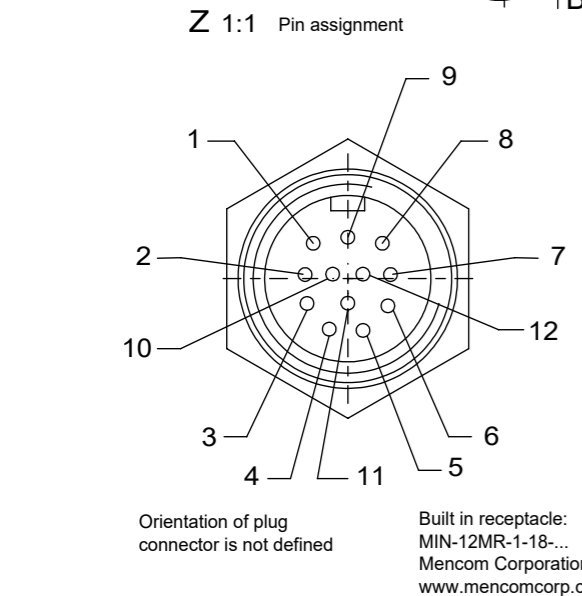
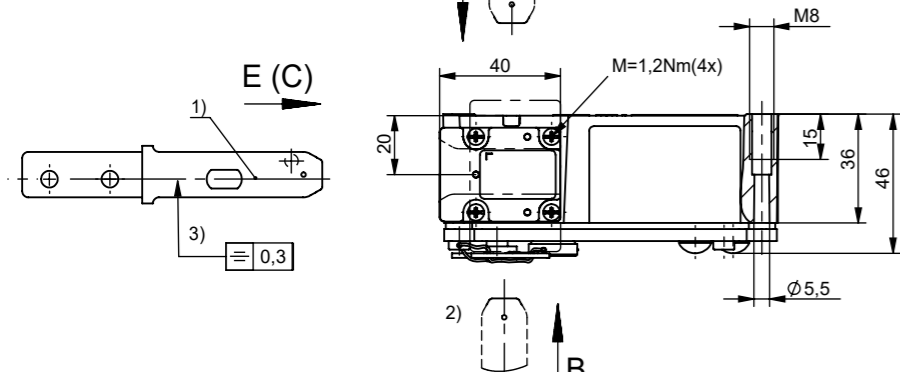
**Illustration:**

TZ.L... actuating head on left.  
(actuating head on right is mirror image)

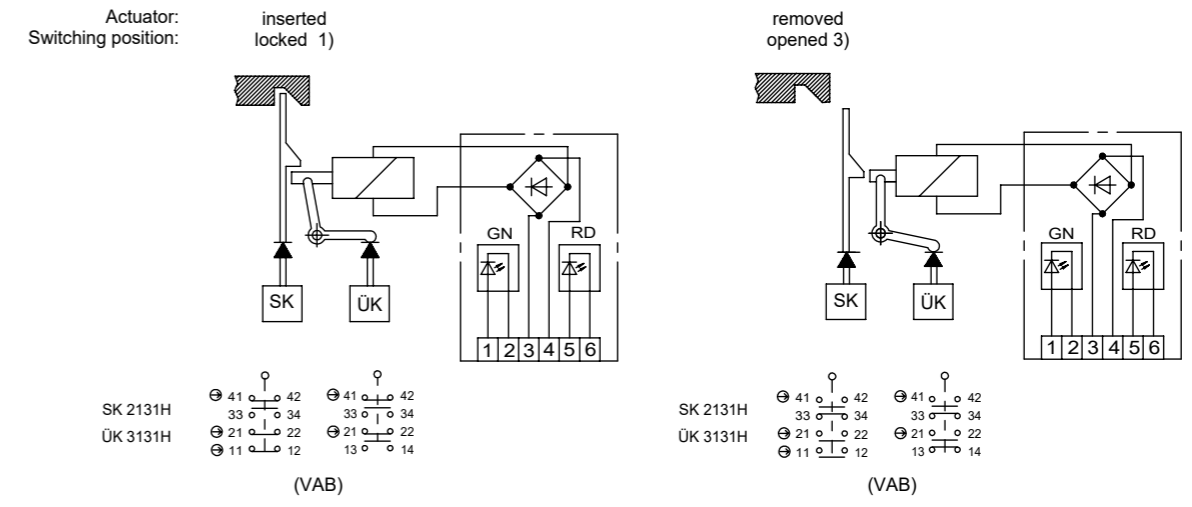


- 1) Please order actuator separately
- 2) The actuator head can be turned to the desired approach direction after undoing the fixing screws.
- 3) For mounting on the machine the safety switch and the actuator have to be assembled

It is not allowed to use safety switch as a mechanical stop



- a Pre-travel:  
The actuator is in the guide, but does not initiate switching operation.
- b Switching operation complete:  
The actuator must be inserted up to this point to ensure reliable switching. The actuator must be withdrawn at least to point a) for switching off.



078161	TZ1LE024PGVABL12C-MF	24V
078159	TZ1RE024PGVABL12C-MF	24V
ID No.	Type	Operating voltage

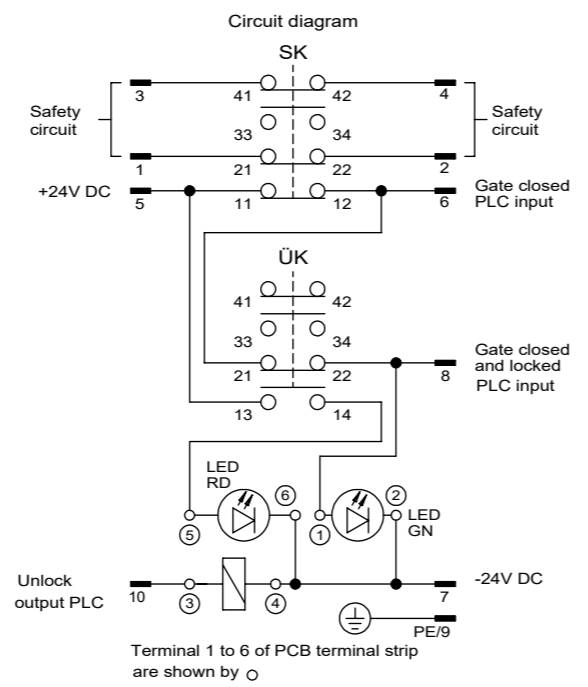
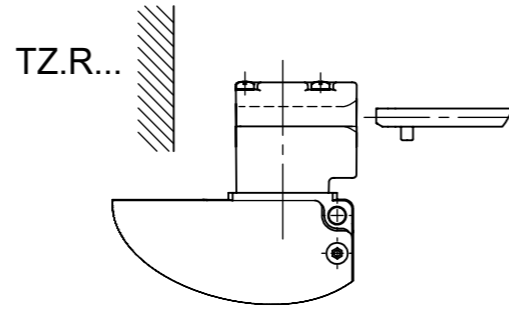
Technical DATA Please observe the operating instructions (in case of disagreement between data sheet and operating instructions, the information of the data sheet are to be considered)

Parameter	Value	Unit
Housing material	Anodized die-cast alloy	
Environmental protection to IEC 60529	IP65	
Mechanical operations	1 x 10 <sup>6</sup>	
Ambient temperature	-25 bis +80	°C
Mounting position	optional	
Approach speed max.	20	m/min
Actuating-, Extraction-, Retainig force (20°)	35 / 30 / 10	N
Locking force max.	2000	N
Locking force according to test principle GS-ET-19 (Fzh = Fmax/1,3)	1500	N

SWITCH ELEMENT		
Type	SK2131H, ÜK3131H	
Switching principle	Slow action	
Contact material	Silver alloy, gold-flashed	
Terminal		
Plug connector (No. of contacts)	BHA12 (12-pin)	
Rated insulation voltage Ui	250	V
Rated impulse withstand voltage Uimp	1,5	kV
Utilization category	AC-15 Ie 4A Ue 230V	
to IEC / EN 60 947-5-1	DC-13 Ie 4A Ue 24V	
Switching voltage min. at 10mA	12	V
Switching current min. at 24V	1	mA
Short-circuit protection (control fuse)	4A gG	

SOLENOID		
Operating voltage, see type	24	V≈
ON time	100	%
Connected load	7	W

Status LED's The operating voltage of the LED's correspond to the supply voltage of the solenoid.



© EUCHNER GmbH + Co. KG Technische Änderungen vorbehalten, alle Angaben ohne Gewähr / Subject to technical modifications; no responsibility is accepted for the accuracy of this information.