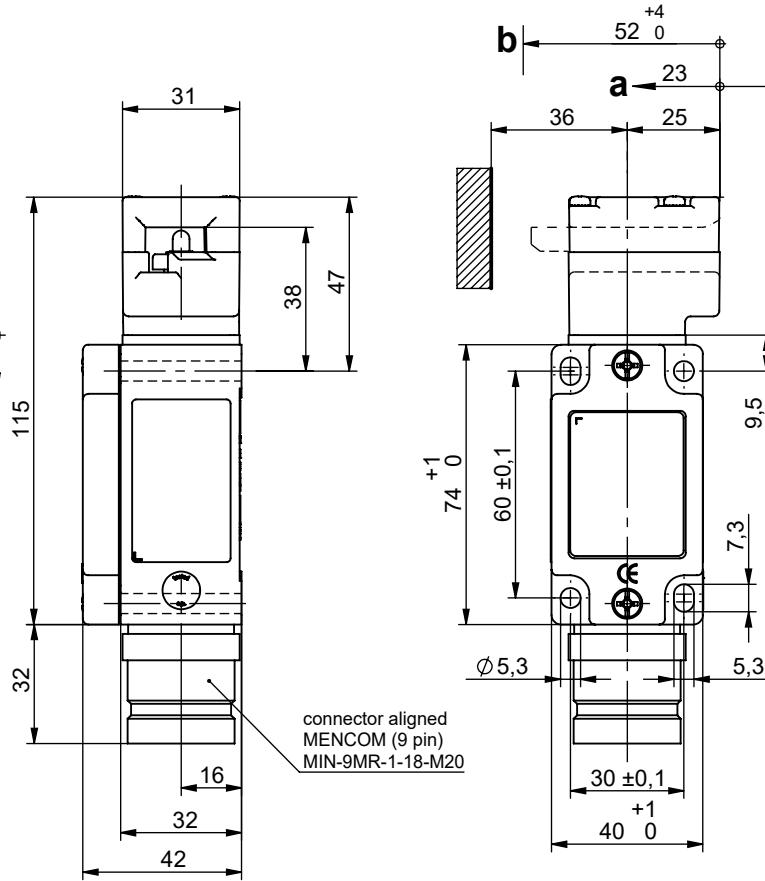


Technische Änderungen vorbehalten, alle Angaben ohne Gewähr / Subject to technical modifications; no responsibility is accepted for the accuracy of this information. © EUCHNER GmbH + Co. KG



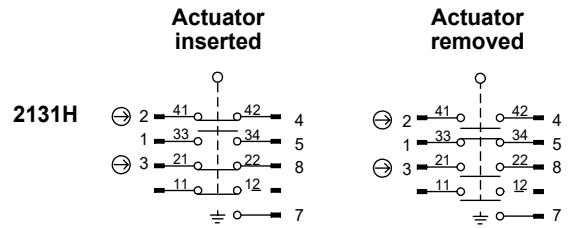
**a Pre-travel**

The actuator is in the guide, but does not initiate switching operation.

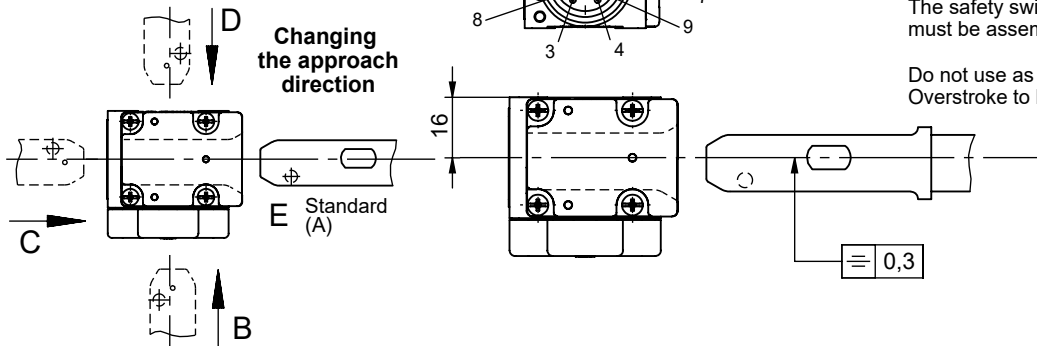
**b Switching operation complete:**

The actuator must be inserted up to this point to ensure reliable switching. The actuator must be withdrawn at least to point **a** for switching off.

098445	NZ2VZ-2131E-9C-DCX
ID-Nr.	Type



**Changing the approach direction**



**Please order actuator separately**

The safety switch and actuator must be assembled for installation purposes.

Do not use as an end stop!  
Overstroke to be limited externally.

**Technical Data**

Please observe the operating instructions (in case of disagreement between data sheet and operating instructions, the information of the data sheet are to be considered)

Parameters	Value	Unit
Housing material	Anodized die-cast light alloy	
Degree of protection according to IEC 60529	IP 65	
Mechanical service life	2x10 <sup>6</sup> operation cycles	
Straight actuator	-25 bis +80 °C	
Ambient temperature	optional	
Installation position	20 m/min.	
Approach speed max.	1200 1/h	
Actuation frequency	35 / 35 / 8 N	
Actuating-/ Extraction-/ Retention force (at 20 °C)	SK2131H	
Switching element	1 NO + 2 NC	
Contact elements	Slow-action switch	
Switching principle	Silver alloy, gold flashed	
Contact material	Connector	
Connection type	AWG 18	
Cabel cross-section max.	250 V	
Rated insulation voltage Ui	1,5 kV	
Rated impulse withstand voltage Uimp	AC-15 4A 230V	
Utilization category according to EN 60947-5-1	DC-13 4A 24V	
Switching voltage min. 10mA	12 V	
Switching current min. at 24V	1 mA	
Short circuit protection (control circuit fuse)	4A gG	