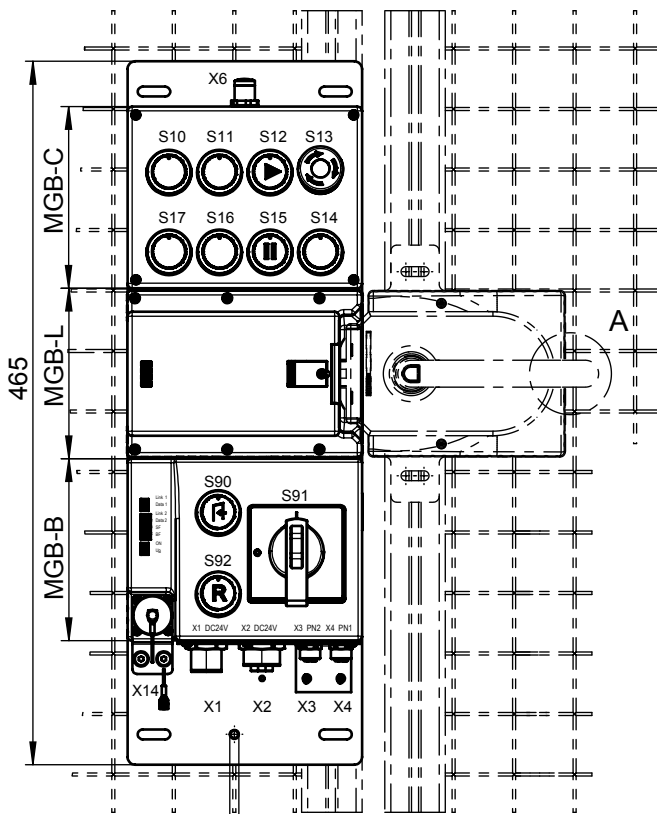


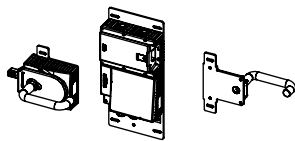
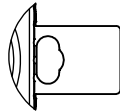
Technische Änderungen vorbehalten, alle Angaben ohne Gewähr / Subject to technical modifications; no responsibility is accepted for the accuracy of this information. © EUCHNER GmbH + Co. KG

...-R-...

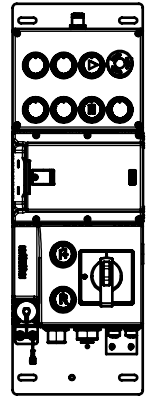


Inklusive M6
Funktionserde
Including functional earth

Detail A
Sperrverriegelung im ausgefahrenen Zustand
Automatic lockoutbar in "open" position.

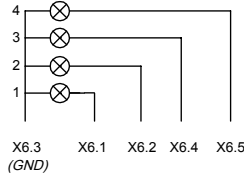


...-L-...



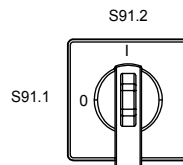
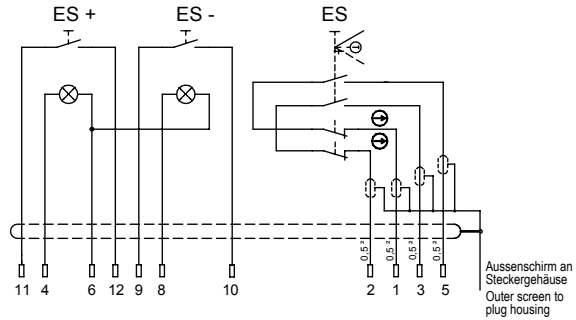
X1 / X2 7/8" Power
X3 / X4 M12 D-coded (IEC 61076-2-101)

X6 (Signal stack modul)
M12 5-polig (Buchse) - ausgerichtet
M12 5-pin (female) - aligned



X14 RC12 (Buchse/ female)
ES (Zustimmtaster / Enabling Switch)

z.B. ZSB077029
Anschlussbelegung / PIN assignement



S91
Betriebsartenwählschalter
Operating mode selector switch

	Position	7	6	5
S91.1	0	0	1	1
S91.2	1	1	0	1

	MGB-H	MGB-L...	MGB-E..	Türanschlag Door hinge	S10, 11, 16, 17 Taster beleuchtet Button illuminated	S12 Taster beleuchtet Button illuminated	S13	S14 Taster beleuchtet Button illuminated	S15 Taster beleuchtet Button illuminated	S90 Taster beleuchtet Button illuminated	S91	S92 Taster beleuchtet Button illuminated
MGB-L1CB-PNA-R-124818		X		R	WEISS WHITE	▶ GRÜN GREEN	NOT-HALT Taster beleuchtet Emergency stop illuminated	WEISS WHITE	 GELB YELLOW	◀ WEISS WHITE	Betriebsarten- wählschalter Operating mode selector switch	R BLAU BLUE
MGB-L1HECB-PNA-R-124819	X	X	X									
MGB-L2CB-PNA-R-157121		X										
MGB-L2HECB-PNA-R-157122	X	X	X	L	WEISS WHITE	▶ GRÜN GREEN	NOT-HALT Taster beleuchtet Emergency stop illuminated	WEISS WHITE	 GELB YELLOW	◀ WEISS WHITE	Betriebsarten- wählschalter Operating mode selector switch	R BLAU BLUE
MGB-L1CB-PNA-L-124820		X										
MGB-L1HECB-PNA-L-124821	X	X	X									
MGB-L2CB-PNA-L-157124		X		L	WEISS WHITE	▶ GRÜN GREEN	NOT-HALT Taster beleuchtet Emergency stop illuminated	WEISS WHITE	 GELB YELLOW	◀ WEISS WHITE	Betriebsarten- wählschalter Operating mode selector switch	R BLAU BLUE
MGB-L2HECB-PNA-L-157125	X	X	X									

Betriebsanleitung beachten
 (Datenstruktur Typ B)
 (bei Abweichungen zwischen
 Datenblatt u. Betriebsanleitung
 gelten die Daten des Datenblattes)

Please observe operating instructions
 (Data structure type B)
 (in case of disagreement between data
 sheet and operating instructions, the information
 of the data sheet are to be considered)

Maße in mm / Dimensions in mm



© EUCHNER GmbH + Co. KG

no responsibility is accepted for the accuracy of this information.

Technische Änderungen vorbehalten, alle Angaben ohne Gewähr / Subject to technical modifications;

PROFINET

Eingangsbereich / Input range: Bit 7 6 5 4 3 2 1 0

Datenbytes (Datenblöcke für nicht sichere Funktion) Data bytes (data blocks for unsafe functions)	MGB-B	Slot 1	Byte 0	-	-	-	-	-	S92	-	S90
			Byte 1	-	-	-	-	-	-	-	-
	MGB-C	Slot 2	Byte 0	S17	S16	S15	S14	-	S12	S11	S10
			Byte 1	-	-	-	-	-	-	-	-
	Emergency stop	Slot 4	Byte 0	-	-	-	-	-	-	-	S13
	MGB-L	Slot 5	Byte 0	ÜK	SK	-	-	-	Z	R	T
	Operating mode sel.	Slot 6	Byte 0	-	-	-	-	-	S91	S91	S91
	Enabling switch	Slot 7	Byte 0	Holder	ES -	ES +	-	-	-	-	ES
Diagnostics	Slot 8	Byte 0	-	-	E	E	E	E	E	E	

Ausgangsbereich / Output range: Bit 7 6 5 4 3 2 1 0

MGB-B	Slot 1	Byte 0	-	-	-	-	-	H92	-	H90
MGB-C	Slot 2	Byte 0	H17	H16	H15	H14	-	H12	H11	H10
Signal stack modul	Slot 3	Byte 0	-	-	-	-	X6.5	X6.4	X6.2	X6.1
Emergency stop	Slot 4	Byte 0	-	-	-	-	-	-	-	H13
MGB-L	Slot 5	Byte 0	-	-	-	-	-	-	-	S
Operating mode sel.	Slot 6	Byte 0	-	-	-	-	-	-	-	-
Enabling switch	Slot 7	Byte 0	-	-	-	-	-	-	ES -	ES +
Diagnostics	Slot 8	Byte 0	-	-	-	-	-	-	Reset	Q

PROFIsafe

Eingangsbereich / Input range: Bit 7 6 5 4 3 2 1 0

Datenbytes (Datenblöcke für sichere Funktion)	SAFETY	Slot 9	Byte 0	S91	S91	S91	Z	R	T	ES	S13	
			Byte 1	-	-	-	-	-	-	-	ÜK	SK
			Byte 2-5	PROFIsafe intern genutzt (Steuerbyte, CRC usw.) Used within Profisafe (control byte, CRC etc.)								

Ausgangsbereich / Output range: Bit 7 6 5 4 3 2 1 0

SAFETY	Slot 9	Byte 0	-	-	-	-	-	-	-	-	S
		Byte 1	-	-	-	-	-	-	-	-	-
		Byte 2-5	PROFIsafe intern genutzt (Statusbyte, CRC usw.) Used within Profisafe (status byte, CRC etc.)								

ÜK = T and R and Z
 SK = T and R
 L = Lebensdauer / Life

Z = Zuhaltung / guard locking
 R = Riegelstellung / bolt position
 T = Türstellung / door position

E = Gerätediagnose / Device diagnosis
 Q = Quitierung / Acknowledgement
 S = Zuhaltmagnet / Guard locking solenoid