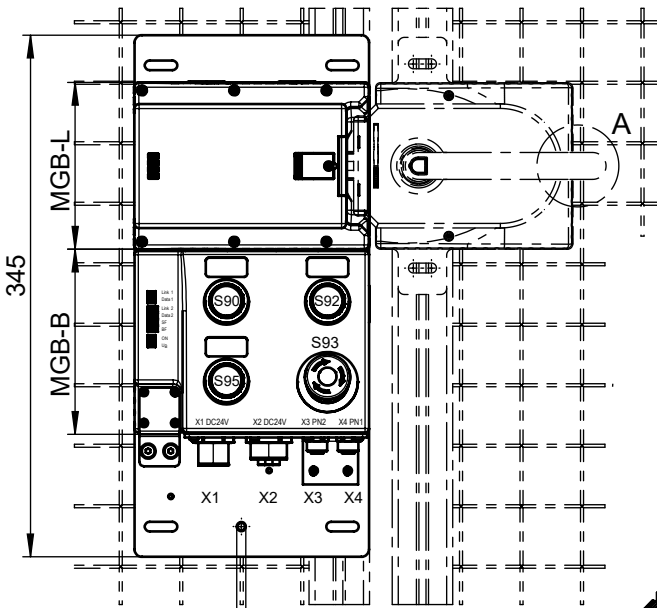


© EUCHNER GmbH + Co. KG Maße in mm / Dimensions in mm Technische Änderungen vorbehalten, alle Angaben ohne Gewähr / Subject to technical modifications; no responsibility is accepted for the accuracy of this information.

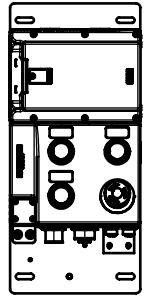
...-R-...



X1 / X2 7/8" Power
X3 / X4 M12 D-coded
 (IEC 61076-2-101)

Detail A
 Sperrverriegelung im ausgefahrenen Zustand
 Automatic lockoutbar in "open" position.

...-L-...



inklusive
 Funktionserde
 including
 function earth

Blenden-Set für Taster inklusive:

Lens-Set for button including:

- 2x weiss / white
- 1x blau / blue
- 1x gelb / yellow
- 1x grün / green
- 1x rot / red



	MGB-H	MGB-L...	MGB-E..	Türanschlag Door hinge	S90	S92	S93	S95
MGB-L1B-PNC-R-121865		X		R	Taster beleuchtet	Taster beleuchtet	NOT-HALT Taster beleuchtet	Taster beleuchtet
MGB-L1HB-PNC-R-121866	X	X						
MGB-L2B-PNC-R-122901		X		L	Button illuminated	Button illuminated	Emergency stop illuminated	Button illuminated
MGB-L2HB-PNC-R-122902	X	X						
MGB-L1B-PNC-L-121867		X		L	Button illuminated	Button illuminated	Emergency stop illuminated	Button illuminated
MGB-L1HB-PNC-L-121868	X	X						
MGB-L2B-PNC-L-122903		X		L	Button illuminated	Button illuminated	Emergency stop illuminated	Button illuminated
MGB-L2HB-PNC-L-122904	X	X						

Inklusive:
 3 Stück Einlegeschilder
 silberfarben, selbstklebend.
 Ohne Aufschrift (12,5x27mm)

Including:
 3 pcs. insertion plates, silver,
 self-adhesive.
 Without inscription (12,5x27mm)

PROFINET

		Eingangsbereich / Input range:		Bit	7	6	5	4	3	2	1	0
Datenbytes (Datenblöcke für nicht sichere Funktion)	MGB-B	Slot 1	Byte 0	-	-	S95	-	-	S92	-	S90	
			Byte 1	-	-	-	-	-	-	-	-	
	Emergency stop	Slot 2	Byte 0	-	-	-	-	-	-	-	S93	
	MGB-L	Slot 3	Byte 0	ÜK	SK	-	-	-	Z	R	T	
	Diagnosics	Slot 4	Byte 0	L	-	-	E	-	E	E	E	
		Ausgangsbereich / Output range:		Bit	7	6	5	4	3	2	1	0
Data bytes (data blocks for unsafe functions)	MGB-B	Slot 1	Byte 0	-	-	H95	-	-	H92	-	H90	
	Emergency stop	Slot 2	Byte 0	-	-	-	-	-	-	-	H93	
	MGB-L	Slot 3	Byte 0	-	-	-	-	-	-	-	S	
	Diagnosics	Slot 4	Byte 0	-	-	-	-	-	-	-	Reset	Q

PROFIsafe

		Eingangsbereich / Input range:		Bit	7	6	5	4	3	2	1	0
Datenbytes (Datenblöcke für sichere Funktion)	SAFETY	Slot 5	Byte 0	-	-	-	Z	R	T	-	S93	
			Byte 1	-	-	-	-	-	-	ÜK	SK	
				Byte 2-5	PROFIsafe intern genutzt (Steuerbyte, CRC usw.) Used within Profisafe (control byte, CRC etc.)							
		Ausgangsbereich / Output range:		Bit	7	6	5	4	3	2	1	0
data bytes (data blocks for safe functions)	SAFETY	Slot 5	Byte 0	-	-	-	-	-	-	-	-	S
			Byte 1	-	-	-	-	-	-	-	-	-
				Byte 2-5	PROFIsafe intern genutzt (Statusbyte, CRC usw.) Used within Profisafe (status byte, CRC etc.)							

Betriebsanleitung beachten
 (Datenstruktur Typ B)
 (bei Abweichungen zwischen
 Datenblatt u. Betriebsanleitung
 gelten die Daten des Datenblattes)

**Please observe the
 operating instructions**
 (Data structure type B)
 (in case of disagreement between
 data sheet and operating instructions,
 the information of the data sheet
 are to be considered)

ÜK = T and R and Z Z = Zuhaltung / guard locking E = Gerätediagnose / Device diagnosis
 SK = T and R R = Riegelstellung / bolt position Q = Quittierung / Acknowledgment
 L = Lebensdauer / Life T = Türstellung / door position S = Zuhaltmagnet / Guard locking solenoid