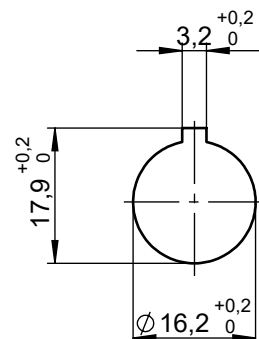
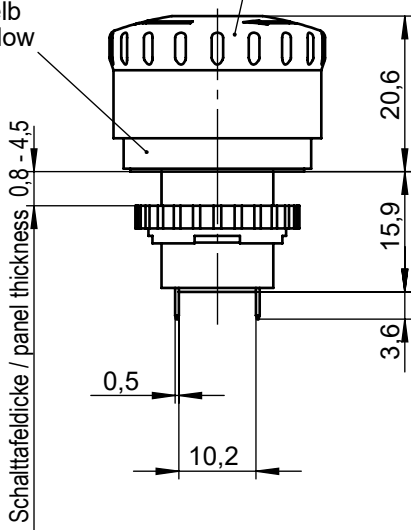


Schalttafelausschnitt  
Control panel cut-out

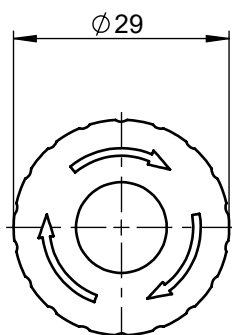
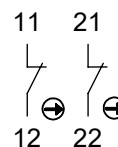


Farbe Drucktaste: grau  
Push button color: grey

Farbe Sockel: gelb  
Socket color: yellow



Anschlussbelegung  
connection assignment



Technische Daten / Technical Data	
Taste verrastend / Push button latches when pressed in	
Tastenrückstellung / Unlock push button	Zug- und Drehentriegelung / pull release and rotary release
Schutzart / Degree of protection	IP 65
Überlastsicher / Overload-proof	EN 418
Schaltleistung I <sub>e</sub> DC-13 / Switching capacity I <sub>e</sub> DC-13	24V / 1A