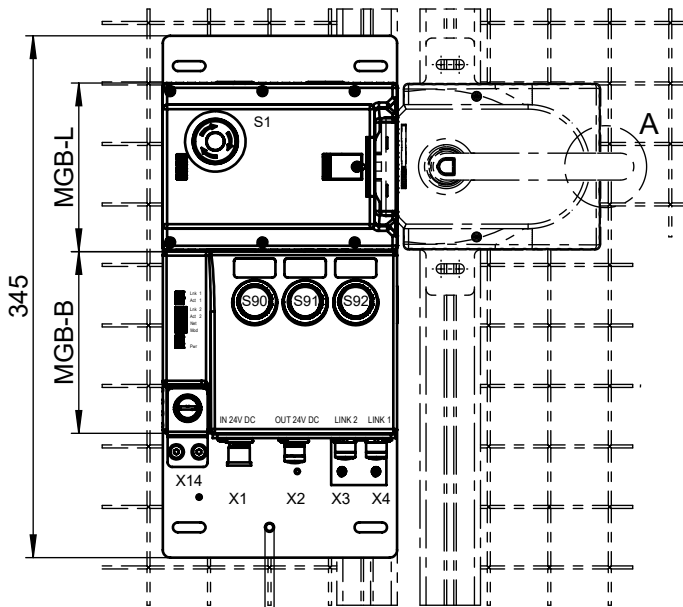


...-R-...



inklusive M6  
Funktionserde  
function earth  
included

Blenden-Set für Taster inklusive:  
Lens-Set for push-buttons included:

- 2x weiss / white  
1x blau / blue  
1x gelb / yellow  
1x grün / green  
1x rot / red

Inklusive:  
3 Stück Einlegeschilder  
silberfarben, selbstklebend.  
Ohne Aufschrift (12,5x27mm)

Included:  
3 pcs. insertion plates, silver,  
self-adhesive.  
Without inscription (12,5x27mm)

**Betriebsanleitung beachten**  
(bei Abweichung zwischen  
Datenblatt u. Betriebsanleitung  
gelten die Daten des Datenblattes)

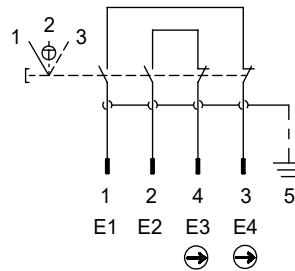
**Please observe the  
operating instructions**  
(in case of disagreement between  
data sheet and operating instructions,  
the information of the data sheet  
are to be considered)

**X1** M12 A-coded (Stecker/ male) 4-polig  
**X2** M12 A-coded (Buchse/ female) 4-polig

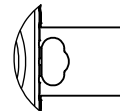
**X3 / X4** M12 D-coded (Buchse/ female) 4-polig

**X14** M12 A-coded (Buchse/ female) 5-polig  
EN (Zustimmtaster / Enabling Switch)

z.B. 110560 ZSA2B4G10CC2322  
Anschlussbelegung / PIN assignment



**Detail A**  
Sperrverriegelung im  
ausgefahrenen Zustand  
Automatic lockoutbar in "open" position.



	MGB-H...	MGB-L...	MGB-E...	Türanschlag Door hinge	S1	S90	S91	S92
MGB-L1B-EIA-R-136471		X		R	NOT-HALT Taster beleuchtet	Taster beleuchtet		
<b>MGB-L1HB-EIA-R-159659</b>	X	X						
MGB-L1B-EIA-L-136483		X		L	Emergency stop illuminated	Push-button illuminated		
<b>MGB-L1HB-EIA-L-159660</b>	X	X						

## EtherNet / IP

Datenbytes / Data bytes  
Datenblöcke / Data blocks

Standardfunktionen Standard functions	Connection header
Sichere Funktionen Safe functions (FI.)	Failsafe input 0
Standardfunktionen Standard functions	Input 0
	Input 1
	Input 2
	Diagnostics
	Fault code
	Fault code

Eingangsbereich / Input range:

Bit	7	6	5	4	3	2	1	0
Byte 0	-	-	-	-	-	DA	CF	RM
Byte 1	DiagnosticSequenceCount							
Byte 2	-	-	-	-	-	-	-	-
Byte 3	-	-	-	-	-	-	-	-
Byte 4	-	-	-	-	-	-	FI.EN	FLES
Byte 5	FI.UK	FI.SK	-	-	-	FI.L	FI.B	FI.D
Byte 6	-	-	-	S92.1	-	S91.1	-	S90.1
Byte 7	-	-	-	-	-	-	-	-
Byte 8	-	-	-	-	-	-	-	-
Byte 9	D.LT	-	D.OL	-	D.EN	D.ES	D.PF	-
Byte 10	FaultCode							
Byte 11	FaultCode							

Ausgangsbereich / Output range:

Bit	7	6	5	4	3	2	1	0
Byte 0	-	-	-	-	-	-	-	FO.L
Byte 1	-	-	-	-	-	H92	H91	H90
Byte 2	-	-	-	-	-	-	-	H1
Byte 3	Q.PF	Q.G	-	-	-	-	-	-

DA = Diagnostic active  
CF = Connection faulted  
RM = Run mode  
FI.UK = D and B and L

FI.SK = D and B  
FI.L = Guard locking  
FI.B = Bolt position  
FI.D = Door position

D.LT = Lifetime  
D.OL = Guard locking  
D.ES = Emergency stop  
D.PF = Plausibility fault

FO.L = Guard locking  
Q.PF = Acknowledge plausibility fault  
Q.G = Acknowledge all