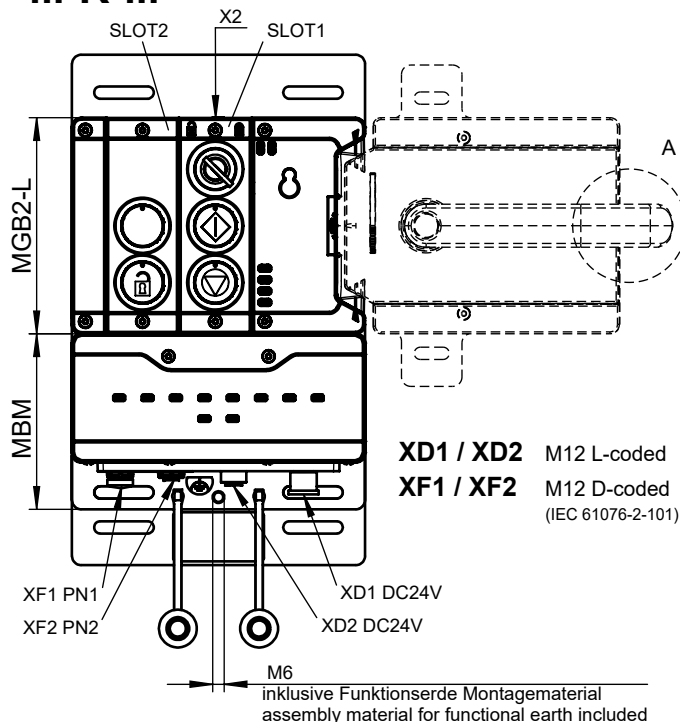
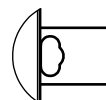


...-R-...



Detail A

Sperreinsatz im ausgefahrenen Zustand
Automatic lockoutbar in "open" position.



Inklusive:

- Erdungsschraube M6x8
(AC-FE-GS-M6X8-170020)

Including:

- Grounding screw M6x8
(AC-FE-GS-M6X8-170020)

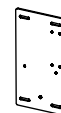
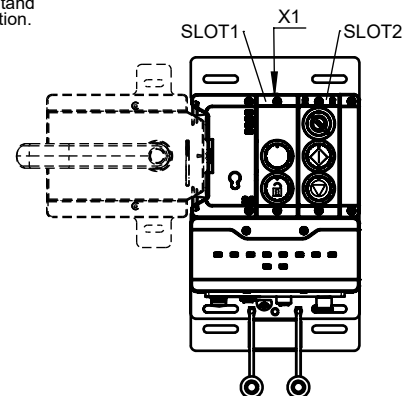
Betriebsanleitung beachten

(bei Abweichungen zwischen Datenblatt und
Betriebsanleitung gelten die Daten des Datenblattes)

Please observe the operating instructions

(in case of disagreement between data sheet and
operating instructions, the information of the
data sheet are to be considered)

...-L-...



	MGB2-L...	MSM... (SLOT1)	MSM... (SLOT2)	AC-MC... (X1)	AC-MC... (X2)	MBM...	AM...	MGB2-H...
MGB2-L1B-PN-U-S2-GA-R-175697	136776	175664	175662	157024	156718	169766	156682	-
MGB2-L1HB-PN-U-S2-GA-R-175695	136776	175664	175662	157024	156718	169766	156682	157369
MGB2-L1B-PN-U-S2-GA-L-175699	136776	175662	175664	156718	157024	169766	156682	-
MGB2-L1HB-PN-U-S2-GA-L-175696	136776	175662	175664	156718	157024	169766	156682	157371
MGB2-L2B-PN-U-S2-GA-R-175707	156392	175664	175662	157024	156718	169766	156682	-
MGB2-L2HB-PN-U-S2-GA-R-175705	156392	175664	175662	157024	156718	169766	156682	157369
MGB2-L2B-PN-U-S2-GA-L-175710	156392	175662	175664	156718	157024	169766	156682	-
MGB2-L2HB-PN-U-S2-GA-L-175706	156392	175662	175664	156718	157024	169766	156682	157371

Übersicht der Kommunikationsdaten, siehe Blatt 2
Overview of the communication data, see sheet 2

Übersicht der Kommunikationsdaten:

Overview of the communication data:


Input MGB2...R-...

Ethernet ¹⁾ standard	Bit 7	Bit 6	Bit 5	Bit 4	Bit 3	Bit 2	Bit 1	Bit 0
1st Byte	BM_E_G	-	BM_E_SYS	-	-	BM_E_ML2	BM_E_ML1	BM_D_RUN
2nd Byte	Diagnose Byte (pluggable)							

Ethernet ¹⁾ standard	Bit 7	Bit 6	Bit 5	Bit 4	Bit 3	Bit 2	Bit 1	Bit 0
1st Byte	LM1_E_G	LM1_E_ER	LM1_E_SM1	LM1_E_SM0	-	LM1_I_UK	LM1_I_SK	LM1_D_RUN
2nd Byte	-	-	-	-	-	LM1_I_OL	LM1_I_OT	LM1_I_OD
3rd Byte	Diagnose Byte (pluggable)							

Ethernet ¹⁾ standard	Bit 7	Bit 6	Bit 5	Bit 4	Bit 3	Bit 2	Bit 1	Bit 0
1st Byte	-	-	LM1_SM1_E_S1	-	-	LM1_SM1_I_S3	LM1_SM1_I_S2	LM1_SM1_I_S1

Ethernet ¹⁾ standard	Bit 7	Bit 6	Bit 5	Bit 4	Bit 3	Bit 2	Bit 1	Bit 0
1st Byte	-	-	-	-	-	LM1_SM2_I_S3	LM1_SM2_I_S2	-
2nd Byte	Diagnose Byte (pluggable)							

Ethernet ¹⁾ SAFE	Bit 7	Bit 6	Bit 5	Bit 4	Bit 3	Bit 2	Bit 1	Bit 0
	-	-	-	-	-	LM1_SM1_FI_S1	LM1_FI_UK	LM1_FI_SK


Input MGB2...L-...

Ethernet ¹⁾ standard	Bit 7	Bit 6	Bit 5	Bit 4	Bit 3	Bit 2	Bit 1	Bit 0
1st Byte	BM_E_G	-	BM_E_SYS	-	-	BM_E_ML2	BM_E_ML1	BM_D_RUN
2nd Byte	Diagnose Byte (pluggable)							

Ethernet ¹⁾ standard	Bit 7	Bit 6	Bit 5	Bit 4	Bit 3	Bit 2	Bit 1	Bit 0
1st Byte	LM1_E_G	LM1_E_ER	LM1_E_SM1	LM1_E_SM0	-	LM1_I_UK	LM1_I_SK	LM1_D_RUN
2nd Byte	-	-	-	-	-	LM1_I_OL	LM1_I_OT	LM1_I_OD
3rd Byte	Diagnose Byte (pluggable)							

Ethernet ¹⁾ standard	Bit 7	Bit 6	Bit 5	Bit 4	Bit 3	Bit 2	Bit 1	Bit 0
1st Byte	-	-	-	-	-	LM1_SM1_I_S3	LM1_SM1_I_S2	-

Ethernet ¹⁾ standard	Bit 7	Bit 6	Bit 5	Bit 4	Bit 3	Bit 2	Bit 1	Bit 0
1st Byte	-	-	LM1_SM2_E_S1	-	-	LM1_SM2_I_S3	LM1_SM2_I_S2	LM1_SM2_I_S1
2nd Byte	Diagnose Byte (pluggable)							

Ethernet ¹⁾ SAFE	Bit 7	Bit 6	Bit 5	Bit 4	Bit 3	Bit 2	Bit 1	Bit 0
	-	-	-	-	-	LM1_SM2_FI_S1	LM1_FI_UK	LM1_FI_SK

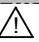
Output

Ethernet ¹⁾ standard	Bit 7	Bit 6	Bit 5	Bit 4	Bit 3	Bit 2	Bit 1	Bit 0
1st Byte	BM_ACK_G	-	-	-	-	-	-	-

Ethernet ¹⁾ standard	Bit 7	Bit 6	Bit 5	Bit 4	Bit 3	Bit 2	Bit 1	Bit 0
1st Byte	LM1_ACK_G	LM1_ACK_ER	-	-	-	-	-	LM1_O_CL

Ethernet ¹⁾ standard	Bit 7	Bit 6	Bit 5	Bit 4	Bit 3	Bit 2	Bit 1	Bit 0
1st Byte	-	-	LM1_SM1_O_H3_B	LM1_SM1_O_H2_B	-	LM1_SM1_O_H3	LM1_SM1_O_H2	-

Ethernet ¹⁾ standard	Bit 7	Bit 6	Bit 5	Bit 4	Bit 3	Bit 2	Bit 1	Bit 0
1st Byte	-	-	LM1_SM2_O_H3_B	LM1_SM2_O_H2_B	-	LM1_SM2_O_H3	LM1_SM2_O_H2	-

Ethernet ¹⁾ SAFE	Bit 7	Bit 6	Bit 5	Bit 4	Bit 3	Bit 2	Bit 1	Bit 0
	-	-	-	-	-	-	-	LM1_FO_CL

¹⁾ Ethernet Protokoll in Abhängigkeit des verwendeten MBM Busmodul / Ethernet protocol according to the used MBM Busmodul

Maße in mm / Dimensions in mm



© EUCHNER GmbH + Co. KG

Technische Änderungen vorbehalten, alle Angaben ohne Gewähr / Subject to technical modifications; no responsibility is accepted for the accuracy of this information.