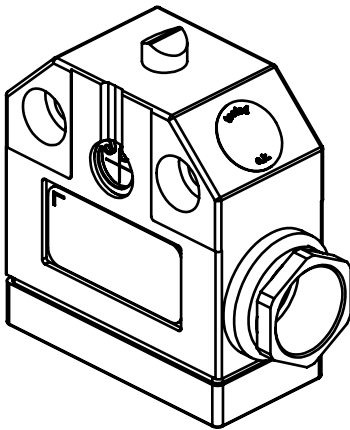
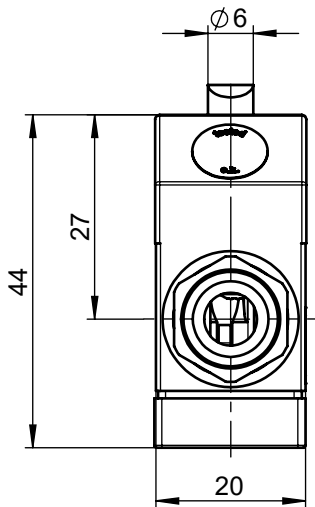
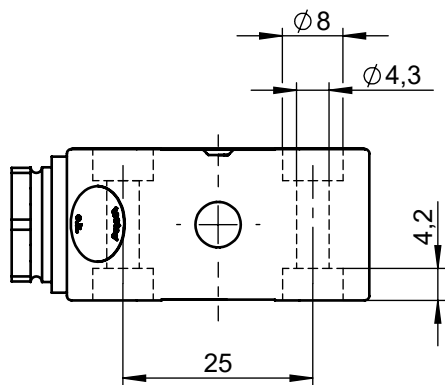
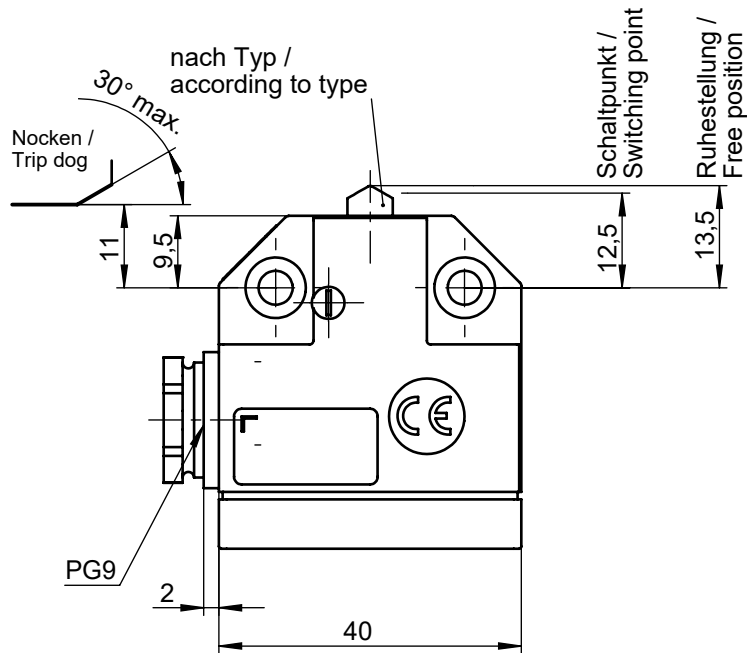


Maße in mm / Dimensions in mm
© EUCHNER GmbH + Co. KG
Technische Änderungen vorbehalten, alle Angaben ohne Gewähr / Subject to technical modifications; no responsibility is accepted for the accuracy of this information.



Schaltelement Switching element	:	ES556 Sprungschaltglied Snap-action switching contact
		1 Wechsler 1 changeover contact
Schutzart nach IEC 60529 Degree of protection acc. to IEC 60529	:	IP 67
Bemessungsisolationsspannung U _i Rated insulating voltage U _i	:	250V
Gebrauchskategorie nach IEC 60947-5-1 Utilization category acc. to IEC 60947-5-1	:	AC-15 U _e 230V I _e 2A DC-13 U _e 24V I _e 2A
Schaltstrom min. bei Schaltspannung Switching current min. at switching voltage	:	10mA DC 24V
Kurzschlusschutz nach IEC 60269-1 (Steuersicherung) Short circuit protection acc. to IEC 60269-1 (control circuit fuse)	:	6A gG

011905	NB01R556PG9
011903	NB01K556PG9
011901	NB01D556PG9
Ident-Nr. / Id. no.	Typ / Type