

# SPECIALISTS IN SAFETY ENGINEERING

FOR THE PACKAGING INDUSTRY.



# EUCHNER

More than safety.



# WE PROVIDE EFFICIENT, INTELLIGENT SOLUTIONS TO PROTECT PEOPLE, MACHINES AND PROCESSES.

**SAFETY EXPERTS:** For 70 years, we have been developing and manufacturing high-quality safety engineering systems for efficient integration into machines and installations. What's more, our solutions automate your processes and enhance your product quality.

**SOLUTION DEVELOPERS:** We understand your technical challenges and develop solutions tailored exactly to your requirements. When doing so, we rely on modern, highly flexible manufacturing systems enabling even small production runs.

**QUALITY SPECIALISTS:** Our quality standards go beyond those stipulated by standards and laws, and our aspirations are higher still. We manufacture all central components in-house on the latest machinery. Internal quality management processes ensure we produce high-quality products.



FOUNDED IN **1953.**

MORE THAN **900** EMPLOYEES.



**40**  
SUBSIDIARIES AND  
DISTRIBUTORS.



# KEEPING EVERY ASPECT OF PACKAGING SAFE.

OUR PRODUCTS COVER THE ENTIRE PACKAGING PROCESS AND  
NOT ONLY MAKE IT SAFER, BUT ALSO MORE FLEXIBLE AND FASTER.

WE CAN FIND THE PERFECT SOLUTIONS FOR YOUR  
SPECIFIC REQUIREMENTS.



#### USE IN COLD AND HOT ENVIRONMENTS:

We supply solutions that can withstand temperatures from -25 °C to +80 °C.

➤ This protects processes at extreme temperatures.



#### USE IN HARSH CONDITIONS:

We supply solutions with a high resistance to a variety of chemicals.

➤ This enables you to use aggressive cleaning agents, acidic liquids or alkaline solutions.



#### USE UNDER DIFFICULT CONDITIONS:

We supply dustproof and watertight solutions  
(degree of protection IP67/IP69).

➤ You can use high-pressure washers and steam-jet cleaners without problems.



#### USE IN HIGHLY FLAMMABLE ENVIRONMENTS:

We supply ATEX solutions to prevent explosions.

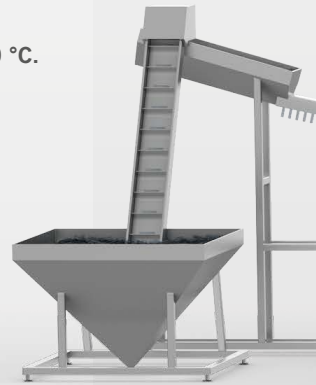
➤ This means they can be used in potentially explosive atmospheres.



#### USE IN PROFESSIONAL PRODUCTION ENVIRONMENTS:

We supply solutions certified by Ecolab and authorized by the FDA.

➤ They allow you to fulfill the approvals required by the industry.



#### NEED FLEXIBILITY?

Thanks to our comprehensive range and numerous product variants, you are sure to find the right solution to suit your specific requirements. We supply safety switches with and without guard locking, pendant stations, MGB door locking systems, key systems, small control systems and safety relays. Our safety engineering is compatible with all commonly used fieldbus systems and AS-i Safety at Work or IO-Link.



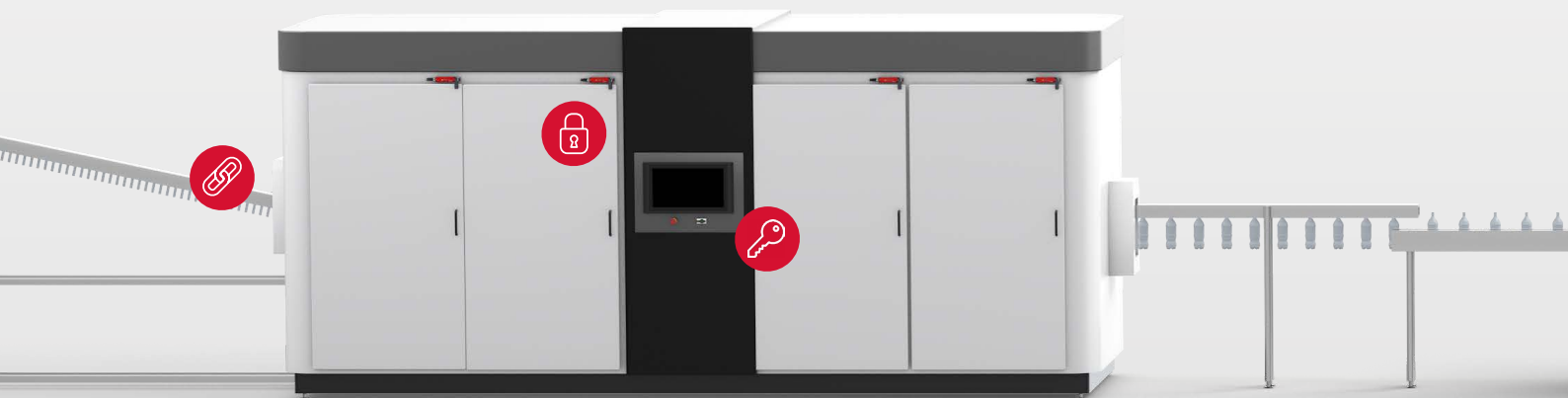
## SAFE DOOR DETECTION

➤ **Are you looking for an economical solution for protecting machines and installation with numerous flaps, access points and doors?** You can rely on our transponder-coded and electromechanical safety switches. Thanks to our wide range of variants, you are guaranteed to find the perfect solution for applications such as concealed installation. Up to twenty devices can be connected in series; they are compatible with many control systems. Another benefit: the option of innovative communication between individual safety switches in the field. All the relevant sensor and device data are sent to the control system via IO-Link.



### CES-C07

- Compact design for concealed installation
- Relevant sensor and device data are sent via IO-Link
- Resistant to aggressive cleaning agents
- High degree of protection IP69



## SAFE GUARD LOCKING

➤ **Would you like to protect your processes from unintentional interruptions and guarantee maximum availability?** Our transponder-coded and electromechanical guard locking devices make this possible. They are available as versions in many different shapes and sizes and with different connection options. Thanks to this diversity, you can pick the right switch for your custom requirements. Just as suitable for small flaps as they are for heavy metal doors, these switches withstand even high tensile forces. They are not only cleverly designed, but can also be used together in flexible combinations. Implementing additional features such as emergency and stop functions or command device is easy and minimizes wiring work.



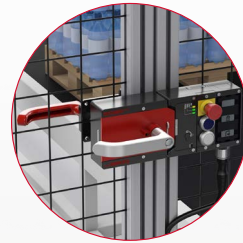
### STAINLESS STEEL CTP

- High locking forces up to 3,900 N
- Critical components consist of high-quality stainless steel
- Resistant to aggressive cleaning agents
- High degree of protection IP69



## DOOR LOCKING SYSTEMS

➤ **Do you need flexible safety door protection that meets the highest standards?** Then our Multifunctional Gate Box MGB2 is exactly the solution you are looking for. This safety system not only protects against hazardous machine movements; it can also flexibly accommodate many other functions, such as additional controls and indicators, at any time. Assembled from individual elements, the locking module becomes a small control panel providing you with a highly functional and compact door locking system that meets all requirements for safety doors. The MGB2 is available as a variant for conventionally wired installations as well as in diverse versions for all commonly used fieldbuses.



### MGB2 CLASSIC

- Locking force 2,000 N
- Can be used on hinged and sliding doors
- Optional buttons and indicators can be integrated directly into the housing
- Optimized for easy installation on profiles
- Comprehensive diagnostic functions



## SAFE KEY SYSTEMS

➤ **Would you like to protect preset parameters from unauthorized access and thereby assure the quality of your products? Or would you like to stop and start hazardous machine movements safely?** This is a snap with our safe key systems. The Electronic Key System EKS protects machines from unauthorized access and improper operation. The EKS manages operating and access rights for every machine and every employee. It can be programmed as needed, enabling safe access control in different production areas from raw product warehouses to quality control and recipe management. The EKS2 key system is the right choice for starting or safely stopping and disabling hazardous machine movements. It is used for assigning access rights, starting specific process sequences, as a machine lockout mechanism or as a key transfer system for multiple installations.



### EKS MODULAR

- Automatic logging on and logging off by placing the Electronic-Key
- Robust housing for use in harsh environments
- Hygienic design throughout
- Plastic with high resistance to media
- High degrees of protection IP65, IP67, IP69



## PENDANT STATIONS

> **Do you want to guarantee maximum safety during setup too?** Then our pendant stations are exactly what you are looking for. Our enabling switches and hand-held pendant stations will keep your operators safe when they have to perform setup or servicing tasks in jog mode. The modular design lets you incorporate many additional functions. A stop command device, a key-operated rotary switch or keypads can transform our pendant stations into multi-purpose systems. Another benefit: we can produce even small production runs of variants customized to suit your needs.



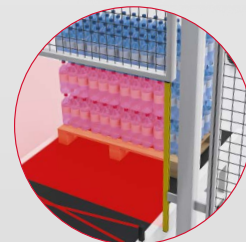
### ZSM

- Robust and ergonomic design
- Wide variety of configurations
- Tactile feedback and optical coverage
- Single-hand operation



## LIGHT GRIDS/LIGHT CURTAINS

> **Would you like to transport pallets out of the production area in an automated process?** Our light curtains and light grids are available to meet your individual requirements. If pallets should leave the production area, the protective field will let them through without triggering the safety function and while still protecting people, for example. You can even secure entire areas containing hazardous goods, for instance. Another benefit: If there is no need for a safety fence, the electro-sensitive protective equipment is an efficient and space-saving solution.



### LCA

- Compact design
- Integrated evaluation
- High level of protection against tampering
- High degrees of protection IP65, IP67



## YOUR **SAFETY EXPERTS** FOR THE PACKAGING INDUSTRY.



DO YOU AIM TO MEET YOUR CUSTOMERS' **PACKAGING REQUIREMENTS** TO THE LETTER?



**OUR PRODUCTS GUARANTEE MAXIMUM SAFETY THROUGHOUT THE PACKAGING PROCESS.**



Your packaging machines may need to dispense individual doses of medicines, put together specific combinations of foods, or change pack sizes quickly to meet your customers' specific needs. Complying with **safety demands** is just as challenging as meeting **customization requirements**. We supply diverse products enabling you to implement your customers' requirements while **protecting people, machines and products**. Our solutions are perfect for integration into modular installations. This way, you're always on the safe side.



RESISTANCE TO MEDIA  
PERSONNEL PROTECTION  
**CUSTOMIZATION**  
MORE THAN SAFETY  
MODULAR DESIGN PROCESS PROTECTION  
**QUALITY FLEXIBILITY**  
MORE THAN SAFETY  
RAPID FORMAT CHANGES  
MADE IN GERMANY  
TEMPERATURE RESISTANCE

# OUR PRODUCTS FOR YOUR SAFETY

## SAFE DOOR DETECTION

Transponder-coded safety switches without guard locking  
CES-C04 / CES-C07

Magnetically coded safety switches without guard locking  
CMS

Electromechanical safety switches without guard locking  
NM / NP / GP / NZ

## SAFE GUARD LOCKING

Transponder-coded safety switches with guard locking  
CTS / CTM / CTP / CTA / CET

Electromechanical safety switches with guard locking  
TP / STP / STA / STM

Safety switches with integrated mounting magnet  
CEM-C40 / CEM-C60

## DOOR LOCKING SYSTEMS

MGB / MGB2 / MGBS

## SAFE KEY SYSTEMS

EKS / CKS / CKS2

## OPERATING DEVICES

ZSM / ZSB / HBA / HBM

## LIGHT GRIDS / LIGHT CURTAINS

LCA

## EMERGENCY STOP DEVICES

ES / RPS

## SAFETY CONTROL SYSTEMS / SAFETY RELAYS

MSC / ESM / ESM-CB / GWY

## > YOU CAN FIND MORE INFORMATION ABOUT OUR PRODUCTS HERE

[www.euchner.de/en-us/Products](http://www.euchner.de/en-us/Products)

## > YOU CAN DOWNLOAD CATALOGS AND FLYERS HERE

[www.euchner.de/en-us/Service/Downloads](http://www.euchner.de/en-us/Service/Downloads)

**EUCHNER GmbH + Co. KG**  
Kohlhammerstraße 16  
70771 Leinfelden-Echterdingen  
Germany

Tel. +49 711 7597-0  
Fax +49 711 753316  
[info@euchner.de](mailto:info@euchner.de)  
[www.euchner.com](http://www.euchner.com)

**EUCHNER**  
More than safety.