



# MGB2 *Classic*

**EUCHNER**

More than safety.

# MGB2 *Classic*

The safety door system MGB2 *Classic* is an enhancement of the globally successful Multifunctional Gate Box MGB from EUCHNER. Unlike the *Modular* variant, however, the *Classic* version does not communicate using a bus system. It is instead connected directly to the respective control system, making it the ideal choice for machines that are wired in parallel.

## Easy installation

All screws are captive and can be tightened or loosened with just one tool. Furthermore, coded terminals or pre-wired plug connectors on the connection modules ensures rapid, trouble-free replacement.



## Maximum flexibility

The modular design of the MGB2 *Classic* offers maximum flexibility to machine manufacturers, integrators and users. All requirements for door locking systems can be met through combination with numerous freely selectable submodules. Submodules can include pushbuttons, selector switches, key-operated rotary switches or emergency stop buttons, for example. This simplifies warehousing and allows subsequent machine modifications or expansions to be implemented efficiently.



**EUCHNER**  
More than safety.

## Locking module

Comprising a robust, industrial housing with integrated mounting plate.

## Submodules

A submodule with up to three controls can be integrated into the locking module.

## Enabling-switch connection

M12 plug for connecting a ZSA or ZSM enabling switch or a stack light.

## Auxiliary release

For releasing the guard locking if there is a power failure.

## Escape release (optional)

The escape release enables people accidentally locked in to open the guard locked door from the danger zone.

## Handle module

Intuitive operation thanks to the integrated door handle, which can be adjusted in 90° increments to suit the mounting situation.

## Solid door stop

## Various controls

Numerous controls such as emergency stop pushbuttons, illuminated pushbuttons, indicators, key-operated switches are available.

## Bolt tongue with transponder

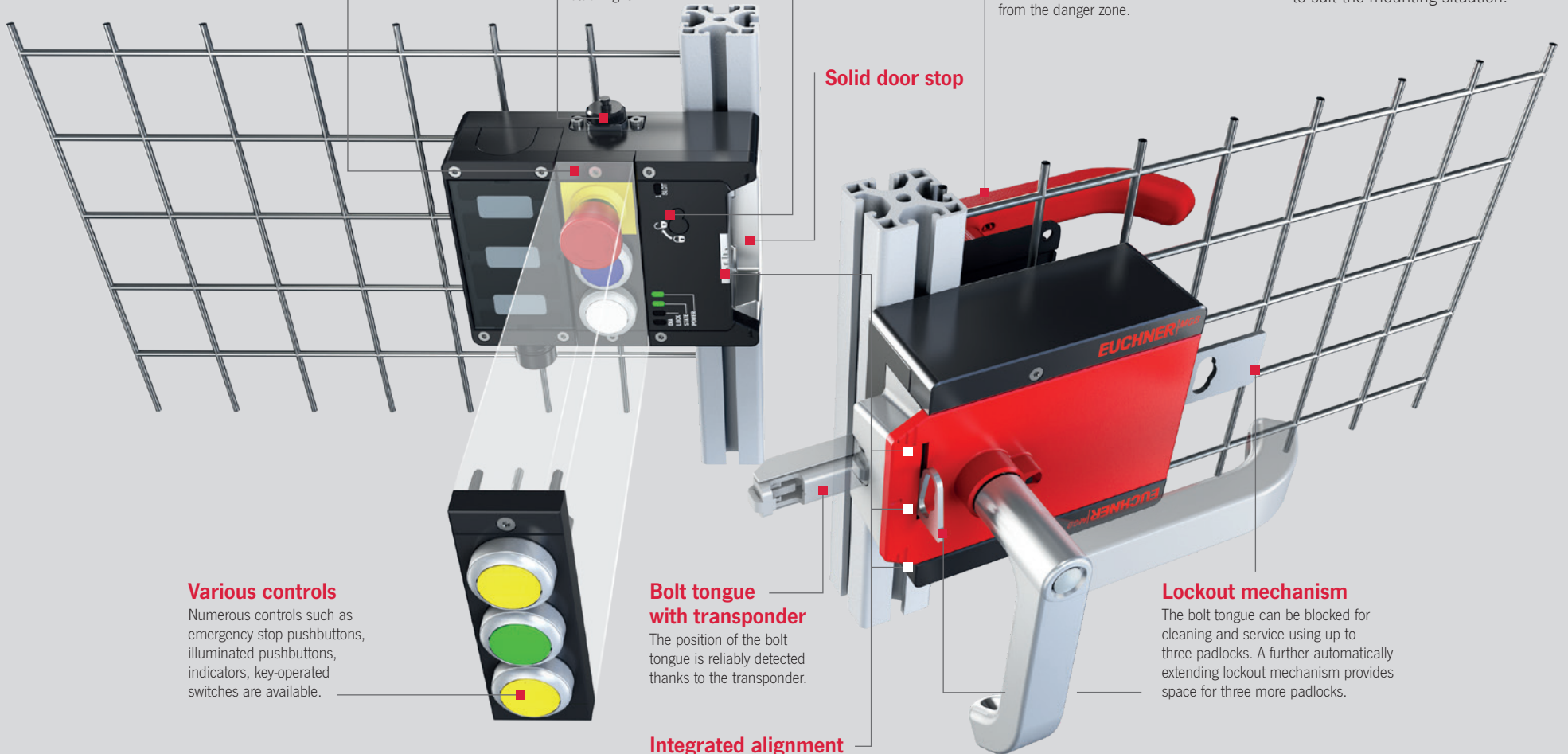
The position of the bolt tongue is reliably detected thanks to the transponder.

## Integrated alignment aid for mounting

The MGB2 can be mounted quickly and straightforwardly on hinged doors and on sliding doors. Thanks to the alignment aid it is immediately apparent whether the MGB2 has been mounted correctly.

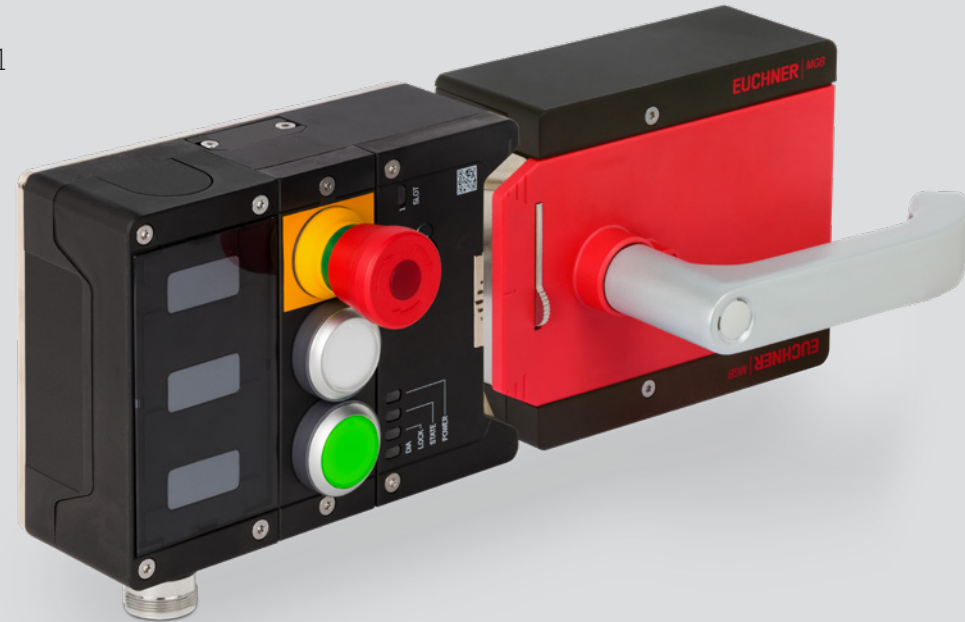
## Lockout mechanism

The bolt tongue can be blocked for cleaning and service using up to three padlocks. A further automatically extending lockout mechanism provides space for three more padlocks.



## Advantages of the MGB2 Classic at a glance:

- ▶ Maximum flexibility thanks to modular design
- ▶ Robust industrial housing
- ▶ Simple connection thanks to plug-in coded terminals or pre-wired plug connectors
- ▶ Category 4/PL e for all safety functions according to EN ISO 13849-1
- ▶ Hot-plugging function simplifies servicing
- ▶ High coding level according to EN ISO 14119
- ▶ Customization by retrofitting accessories
- ▶ Door handle with integral door stop
- ▶ Suitability for doors hinged on the left or right
- ▶ Integrated lockout mechanism
- ▶ Locking force 2,000 N
- ▶ Degree of protection IP65
- ▶ Suitability for use on hinged and sliding doors
- ▶ Comprehensive diagnostic functions



**EUCHNER GmbH + Co. KG**  
Kohlhammerstraße 16  
70771 Leinfelden-Echterdingen  
Germany

Tel. +49 711 7597-0  
info@euchner.de  
www.euchner.de

**EUCHNER**  
More than safety.