

INNOVATIVE SAFETY ENGINEERING

EN

YOUR KEY TO FUTURE-PROOF LOGISTICS

**EUCHNER**  
More than safety.

# LOGISTICS – SURE THING!

Imagine a highly automated logistics center with fenced-in robots and storage and retrieval machines, conveyor systems, loading bays and pallets as far as the eye can see. That's a big area to keep on top of. With EUCHNER's innovative safety engineering you can protect your employees even inside the warehouse without restricting material flow, which helps to safeguard your processes and ensure efficient and precise planning.

## OUR TOP SOLUTIONS FOR YOUR SAFETY AND EFFICIENCY:

- **CKS2 – Smart key system:** Greater time and cost efficiency thanks to a safe key solution for your logistics processes
- **MGB2 – Modular safety door system:** Top-level protection with flexible adaptation to suit your requirements
- **CTS and CES-C07 – Compact safety switches:** Reliable and secure against tampering – for maximum safety at your facilities
- **ZSM – Multifunctional enabling switch:** Optimal ergonomics and maximum flexibility
- **LCA – Light curtains:** Reliable monitoring solution for every application
- **RPS – Rope pull switches:** Ideal protection of large facilities. Optionally available with plug connector to reduce wiring work.
- **ES-FB – Emergency stop device:** Simple installation thanks to housing and M12 plug connector – for the utmost in safety and flexibility

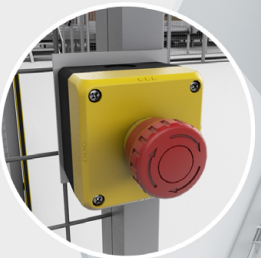
**You can depend on our complete solutions for tomorrow's world.  
Networked. Flexible. Intelligent.**



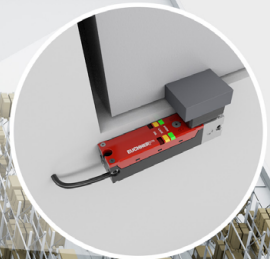
**MGB2**



**ES-FB**



**CTS**



**ZSM**



**CES-C07**



**LCA**



**RPS**



**CKS2**



# OUR INTRALOGISTICS DREAM TEAM

## CKS2 KEY SYSTEM

- All-in-one: the intelligent key system with integrated personal key for maximum safety
- Up to 65,536 different key codes with just one RFID key and one item number
- Lost key? No complicated replacement needed – just teach-in a new key



## MGB2 MODULAR

- Flexible expansion and quick configuration for effortless adjustment to suit your requirements
- Suitable for conventional wiring and fieldbus systems
- Door opening direction can be easily adjusted

**The integration of a key system and door locking mechanism in one single solution creates the perfect combination for your automated warehouse.**

## BENEFITS FOR YOU:

- ⊕ Extremely robust even at temperatures down to -30 °C
- ⊕ Achieves the highest possible safety (cat. 4 / PL e / SIL3)
- ⊕ Worldwide approvals: UL, CCC, FCC, IC



**A CLOSE WORKING  
RELATIONSHIP –  
LITERALLY!**

42 subsidiaries / distributors

900 employees

7,000 high-quality products

[www.euchner.com](http://www.euchner.com)

## **EUCHNER – WHERE YOU ARE**

**EUCHNER GmbH + Co. KG**

Kohlhammerstraße 16

70771 Leinfelden-Echterdingen | Germany

Tel. +49 711 7597-0 | [info@euchner.de](mailto:info@euchner.de)

[www.euchner.com](http://www.euchner.com)

**Follow us:**